

Finis
h
es

lapalma

Finishes

Lapalma srl si riserva il diritto di apportare modifiche tecniche e dimensionali e di introdurre miglioramenti che potrebbero cambiare l'estetica dei prodotti presentati in catalogo. I riferimenti colore stampati non sono vincolanti.

Lapalma srl reserves the right to alter the technical and dimensional specifications given in this publication and to introduce improvements that may change the aesthetics of the products shown in this catalogue. The printed colours hues are not binding.

Lapalma srl behält sich das Recht vor, jederzeit Veränderungen an den technischen Details und den Dimensionen der Produkte vorzunehmen und Verbesserungen einzuführen, die die Ästhetik der Produkte verändern können. Die Farbtöne der Abbildungen können von den tatsächlichen Farben der Produkte abweichen.

Lapalma srl se réserve le droit d'apporter des modifications techniques et de dimensions ainsi que d'introduire des améliorations qui peuvent changer l'esthétique des produits présentés. Les tonalités imprimées n'engagent pas la société.

Lapalma srl se reserva el derecho de cambiar tamaños y especificaciones técnicas de los productos listados en esta publicación, así como el de introducir mejoras que puedan cambiar la estética de los mismos. Por favor tengan en cuenta que los colores de los tejidos mostrados en fotografía no son totalmente fidedignos.

FABRIC

TESSUTO

We select fabrics that adorn the Lapalma collection by applying the criteria of softness, quality and resistance. With their yarns and textures, they offer Italian style that crosses boundaries, leading to emotions in all environments where they are included. To guarantee high performance, we select fabrics with abrasion resistance starting from >50,000 Martindale (many exceed even 100,000 cycles), fire-resistance and light resistance.

Fabric categories

The fabrics are classified according to separate categories of price bands. The range of materials used includes 100% polyester Trevira, mixed wool, technical yarns such as polyamide, as well as 100% virgin wool. The range also includes Iris fabric made of 100% recycled PET.

Customer fabric

Thanks to our tailoring skills, we can provide a customised service. We can upholster the products you choose with customer fabric. You just need to send us an A4 size sample so we can verify feasibility. If accepted, we will ask for a length of fabric in order to make a trial upholstered element. A surcharge will be made for patterned fabrics.



SOFT-LEATHER/LEATHER

PELLE/CUOIO

Soft - leather

Featuring softness and elasticity, all the leather chosen by Lapalma is of European origin, chrome-tanned, pigmented, corrected top-grain and aniline top-grain. It has excellent colourfastness and complies with the main fire-resistance tests such as CigaretteTest EN1021.

Leather

The hide upholstery of our furniture has an impressive thickness of 2 - 2.5mm. This natural pigmented material is resistant to rubbing and has excellent lightfastness.



LAMINATE

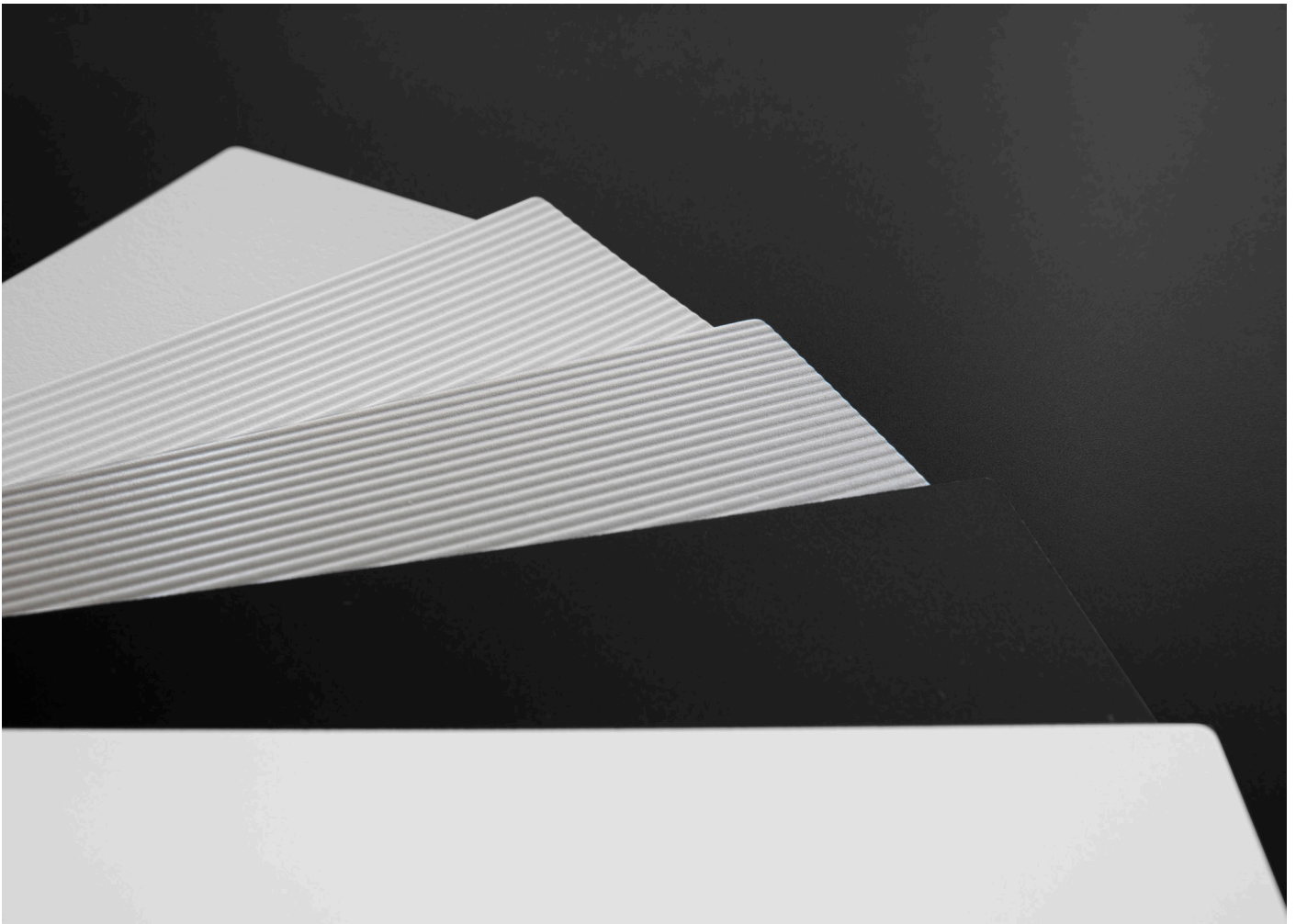
LAMINATI

HPL

High pressure laminate, or HPL, consists of layers of paper impregnated with phenolic and melamine resins, which are bonded together with a high-pressure and heat-protective coating and then applied to a substrate. The resulting surfaces are easy to clean and maintain, lightfast, odourless and resistant to alcohol, organic solvents and water.

Fenix

Fenix is a high-performance material. Non-scratch , fingerprint proof and soft to the touch, it has a slightly matt surface that results in low light reflectivity. It consists of cellulose and innovative resins. Made of 70% layers of paper, the inner layers are impregnated with thermosetting resins, whereas the outer layers are treated with new generation acrylic resins, all subjected to heat and pressure at the same time.



WOOD

LEGNO

Lapalma primarily selects European oak, ash and Canaletto walnut certified according to the main Chain of Custody control standards (FSC). Sliced logs are directly inspected at our cutters' yards: the process of selecting and choosing the best pieces is entrusted to the experience of our employees, who then process individual sheets to obtain semi-finished products for Lapalma's end products.

At Lapalma, all the stages involved in the processing of wood products combine complex industrial technology with craftsmanship and experience. The outcome is a natural product that is controlled yet never identical, a natural wood type.

We use only matt open-pore acrylic varnishes to protect our wood finishes. They make products resistant while preventing any changes in the naturalness and aesthetic variety of this living material. Lots may therefore vary in colour and grain. This is not to be considered the result of faulty production but a value-added feature and a guarantee of the naturalness of our products.



METAL

METALLO

Working with metal, as well as wood, is in our company's DNA.

All metal components are made of partly recycled and totally recyclable alloys such as carbon steel, stainless steel and aluminium. All die-cast aluminium components are made of 94% recycled aluminium, which is then infinitely recyclable, whereas extruded profiles are made of primary aluminium. We use AISI 304 stainless steel, a stainless steel alloy, which is resistant to most aggressive agents and is finished with fine glass bead blasting.

The colour range of our metals consists of polyester powder coatings featuring a high degree of surface coverage, excellent resistance and good protection for products.



PLASTICS

PLASTICHE

The materials we use to give shape to our furnishing elements include various types of high-quality plastics, selected for their high-performance. Lapalma has always been committed to reducing its use of plastic materials, bearing in mind, however, that plastic is not considered a material harmful to the environment when used for furniture that is intended to have a long life and then be recycled at the end of it. This is why the most widely used plastics are polypropylene and polyurethane, both recyclable. Some of our single-structures are made of moulded Baydur, a structural rigid polyurethane that is recyclable and has superior mechanical properties.

Recycled polypropylene

We have also introduced 75% - 85% recycled polypropylene to our collection. It is obtained from recovering plastics from separated waste collection processes. We have decided not to process it with other colours in order to make it recyclable at the end of its life.



MARBLE AND CONCRETE

MARMO E CEMENTO

Marble

The Lapalma collection includes white Carrara marble and matt black Marquina marble. As marble is a natural material, each product made of marble has a unique colour and texture.

Concrete

All cement bases are cast by hand into a mould with artisan care, each item is a unique piece: fibre-reinforced, finely sandblasted, with additives added to make it resist even the most common staining agents.



tessuto / fabric / Stoff / tissu / tejido

Cat A - Jet FIDIVI

Application

Contract and domestic use.

Description

Composition:
100% Polyester - Trevira CS®
Width: 140 cm
Weight: 260 g/m2

Tests

Abrasion
UNI EN ISO 12947-2 65000 ± 10% rubs

Pilling
UNI EN ISO 12945-2 5 (Standard picture)
Tolerance: from 4 to 5

Colour fastness
to rubbing UNI EN ISO 105-X12
(4/5 grey scale)
Tolerance: from 4 to 5
to light UNI EN ISO 105-B02 6 (Blue scale)
Tolerance: from 5 to 8

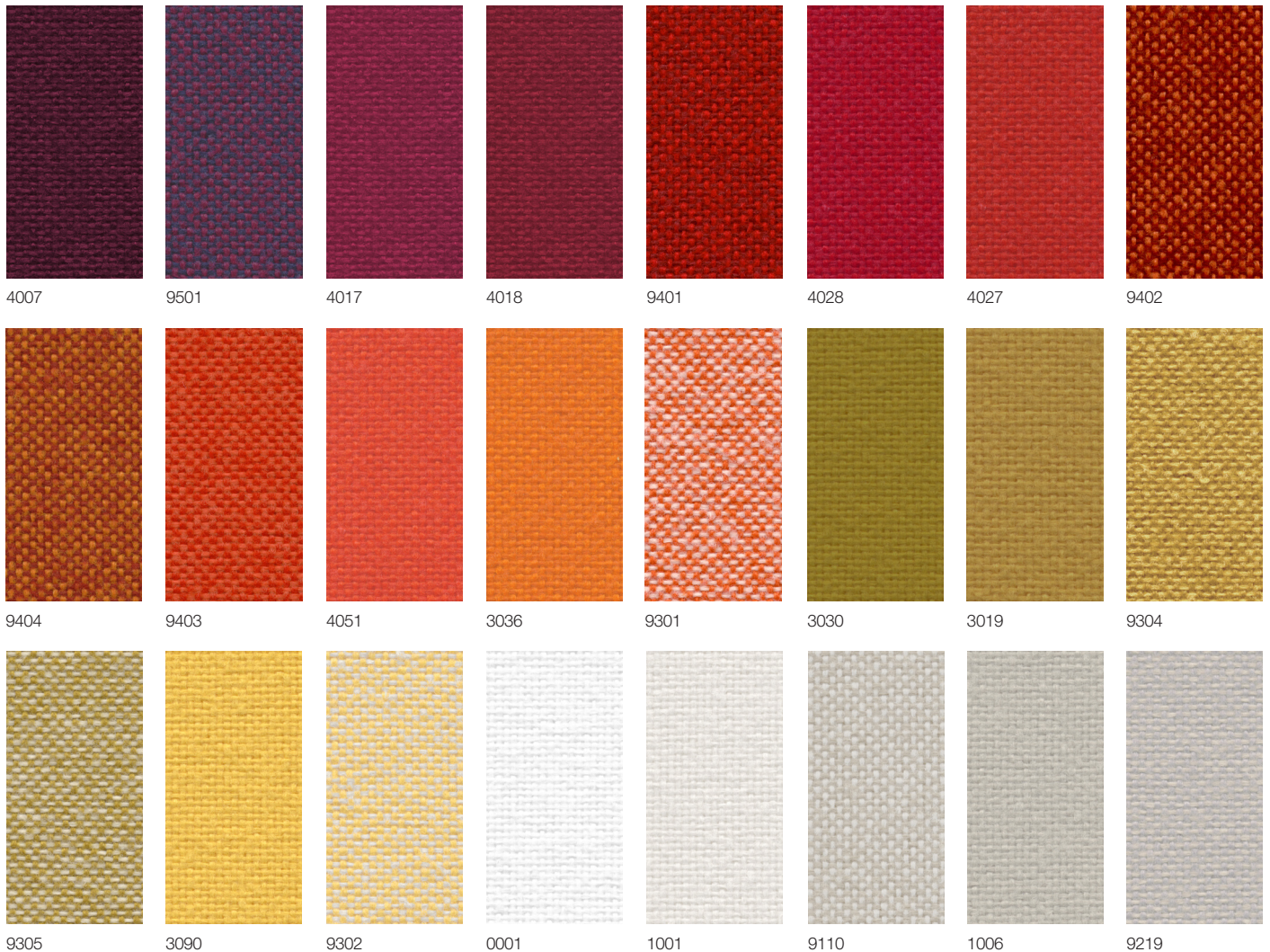
Flame resistance

C1
B1
M1
CRIB 5
EN 1021/1-2
IMO Res. A 652 (16) Part 8
IMO Res. A 471 (XII) Part 7
NF D 60013 Class AM 18

Care

Dry clean or clean with foam detergents.

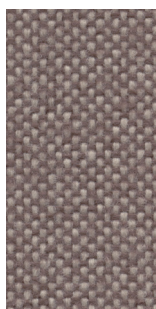
Samples are purely indicative because of natural inconsistencies that occur in the raw materials. As a result there may be small differences in the product delivered.



Cat A - Jet FIDIVI



2024



9109



9108



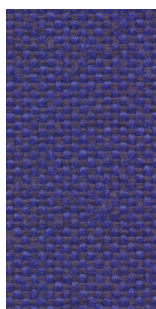
2012



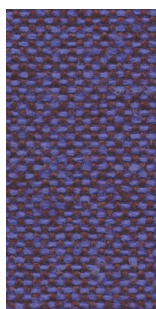
2010



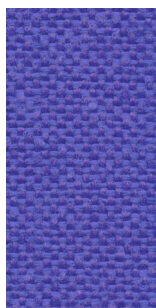
9607



9605



9606



9604



6098



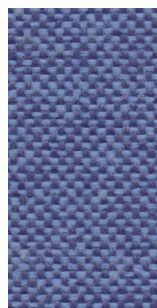
9603



9602



6013



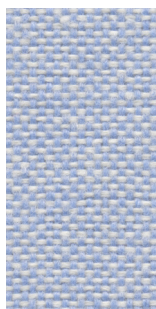
9601



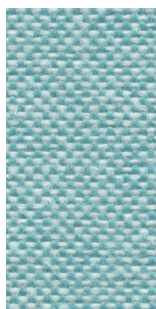
6095



6056



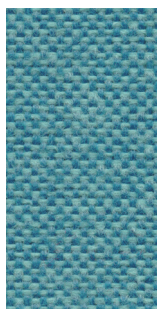
9600



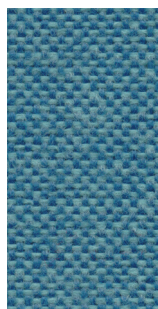
9610



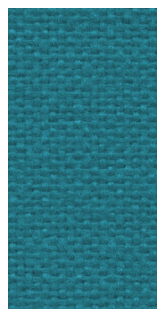
6007



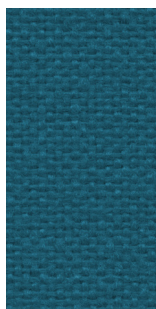
9609



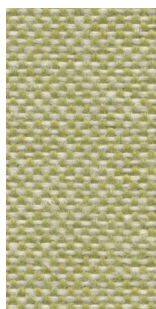
9608



6091



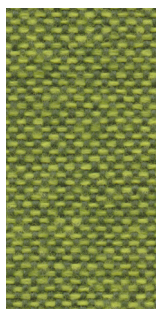
6014



9701



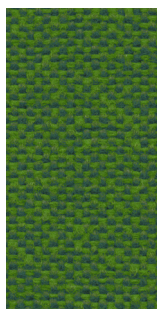
7041



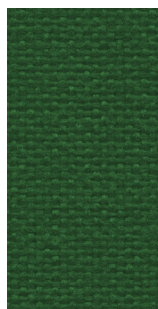
9702



7025



9704



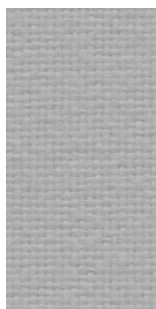
7014



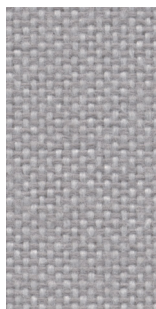
7034



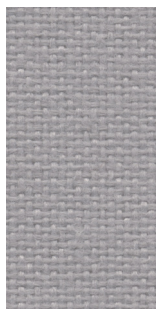
9703



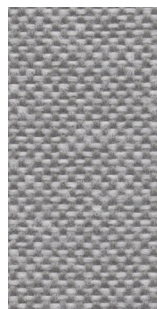
8001



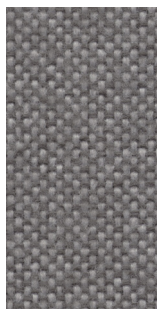
9803



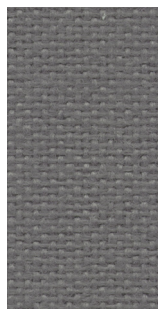
8078



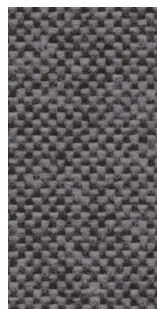
9804



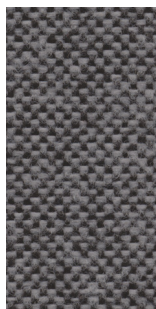
9805



8009



9294



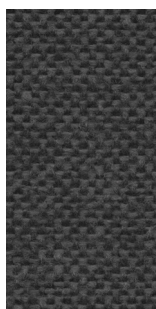
9281



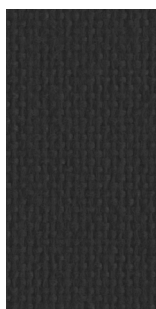
8017

tessuto / fabric / Stoff / tissu / tejido

Cat A - Jet FIDIVI



9806



8033

tessuto / fabric / Stoff / tissu / tejido

Cat A - Maya FIDIVI

Application

Contract and domestic use.

Description

Composition:
100% Polyester - Trevira CS®
Width: 140 cm
Weight: 420 g/m2

Tests

Abrasion
UNI EN ISO 12947-2 100000 ± 10% rubs

Pilling
UNI EN ISO 12945-2 5 (Standard picture)
Tolerance: from 4 to 5

Colour fastness
to rubbing UNI EN ISO 105-X12
(4/5 grey scale)
Tolerance: from 4 to 5
to light UNI EN ISO 105-B02 6 (Blue scale)
Tolerance: from 5 to 8

Flame resistance

C1
B1
M1
CRIB 5
EN 1021/1-2
IMO Res. A 652 (16) Part 8
IMO Res. A 471 (XII) Part 7
BS 7176 Medium Hazard
NF D 60013 Class AM 18

Care

Dry clean or clean with foam detergents.

Samples are purely indicative because of natural inconsistencies that occur in the raw materials. As a result there may be small differences in the product delivered.



Cat A - Maya FIDIVI



9805



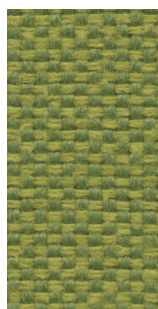
7020



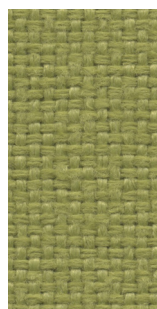
9704



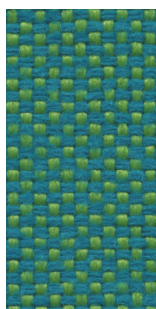
9703



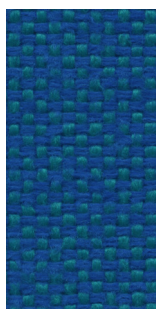
9702



7009



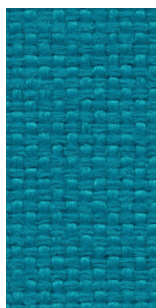
9705



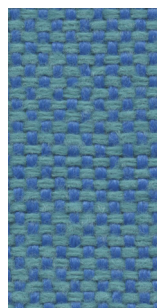
9602



6014



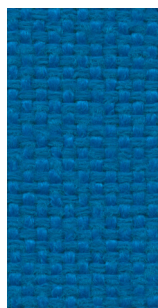
6091



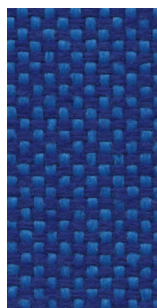
9601



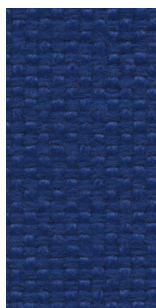
6006



6075



9603



6080



9604



9501



9503



9502

tessuto / fabric / Stoff / tissu / tejido

Cat A - Medley GABRIEL

Design

Mette Krebs Petersen

Application

Offices, hotels,
institutions, domestic use.

Description

Composition:
100% Polyester

Width: 140 cm

Weight: app. 510 g/lin.m

Tests

Abrasion
App. 75.000 Martindale rubs
EN ISO 12947-2

Pilling
Note 4, EN ISO 12945-2

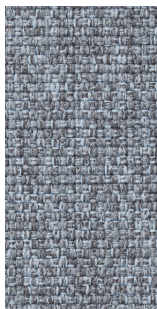
Light fastness
Note 5-7, ISO 105-B02

Flame resistance
BS EN 1021 1&2
BS 5852 Part 1 0,1 Cigarette & match
California Bulletin CAL 117-E-Class 1
Class Uno UNI 9175 Class 1 | EMME
CA TB 117-2013
ÖNORM B 3825-B2-3800-Q1 UK

Care

Dry clean or clean with foam
detergents.

Samples are purely indicative because of
natural inconsistencies that occur in the
raw materials. As a result there may be
small differences in the product delivered.



66008



60999



60167



60004



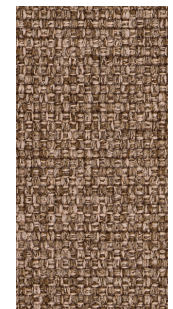
60003



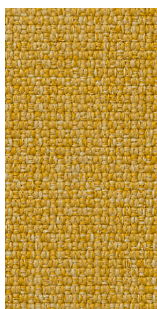
61189



61002



61003



62054



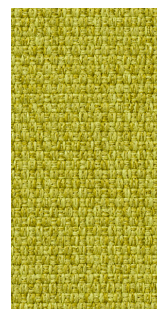
67002



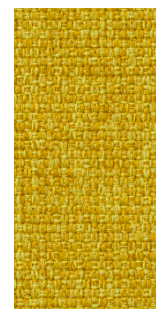
61004



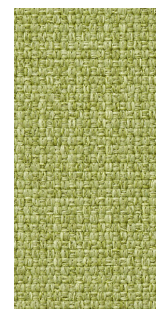
68005



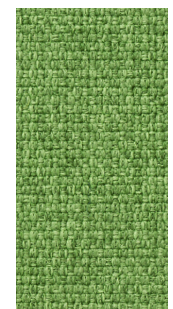
68002



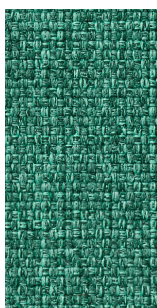
62002



68114



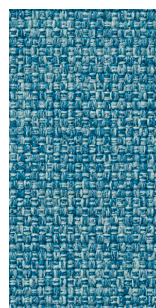
68115



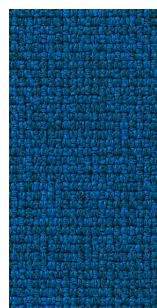
67054



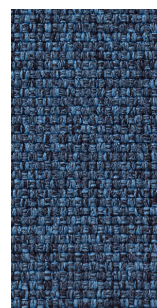
67053



67006



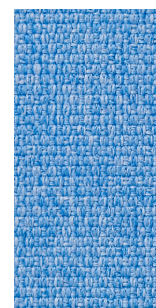
66007



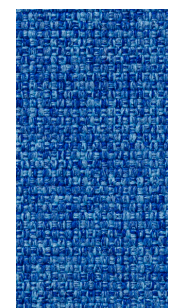
66010



66144

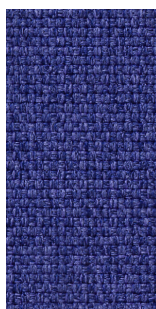


67052

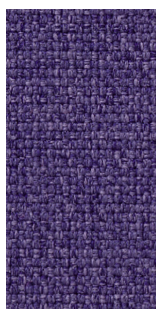


66009

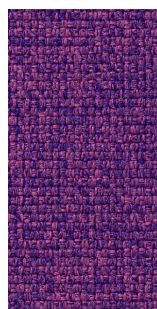
Cat A - Medley GABRIEL



66145



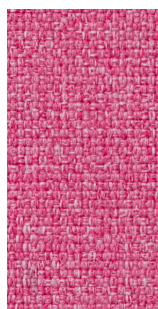
65086



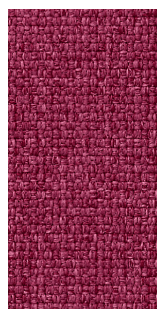
65012



65011



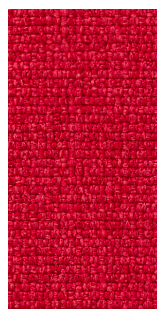
64124



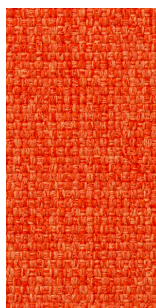
64125



64123



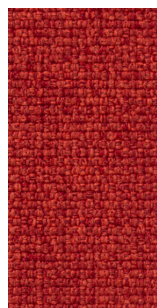
64019



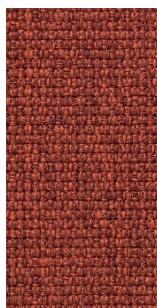
63013



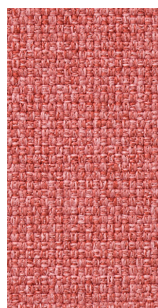
63017



63016



63063



63064

tessuto / fabric / Stoff / tissu / tejido

Cat B - Capture GABRIEL

Application

Contract and domestic use.

Description

Composition:
85% new Zealand wool, 15% polyamide
Width: 140 cm
Weight: app. 475 g/lin.m

Tests

Abrasion
App. 200.000 Martindale rubs
EN ISO 12947

Pilling
Note 4-5, EN ISO 12945

Light fastness
Note 5-7, ISO 105-B02

Flame resistance
EN 1021 1/2
BS 5852 Part 1
BS 5852, part 5 (with treatment)
DIN 4102 B2
UNI 9175/UNI 9176, 1 I-M
US Cal. Tech. Bull. 117.2013

Care

Dry clean or clean with foam
detergents.

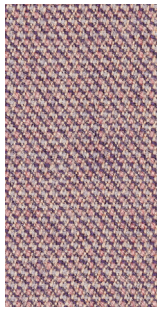
Samples are purely indicative because of natural inconsistencies that occur in the raw materials. As a result there may be small differences in the product delivered.



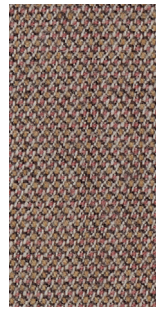
Cat B - Capture GABRIEL



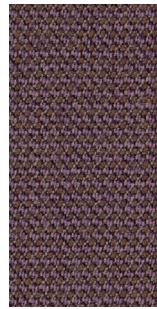
6901



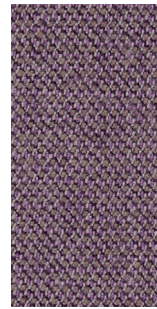
4801



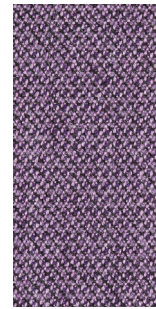
6701



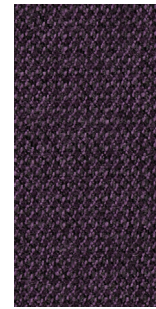
6302



6202



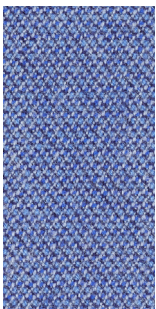
4501



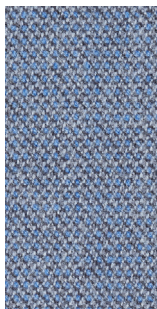
7001



5201



4901



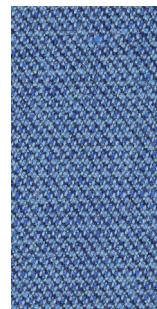
4902



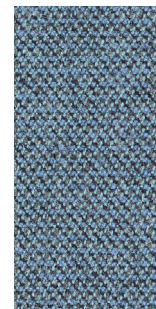
6602



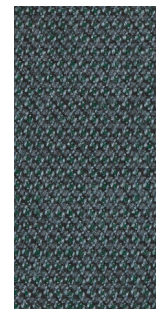
6001



5002



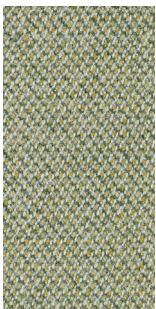
5001



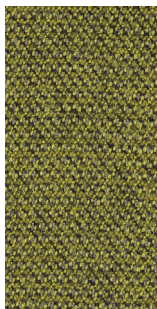
6601



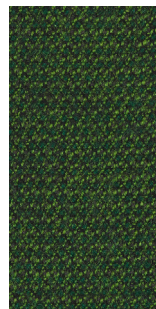
7101



5101



5301



6501

tessuto / fabric / Stoff / tissu / tejido

Cat B - Crisp GABRIEL

Application

Contract and domestic use.

Description

Composition:
93% new Zealand wool, 7% polyamide
Width: 140 cm
Weight: app. 460 g/lin.m

Tests

Abrasion
App. 200.000 Martindale rubs
EN ISO 12947-2

Pilling
Note 4-5, EN ISO 12945-2

Light fastness
Note 5-7, ISO 105-B02

Flame resistance
EN 1021 1/2
BS 5852 Part 1 0,1
UNI 9175 1 I-M
US Cal. Tech. Bull. 117.2013
IMO MSC 307(88)

Care

Dry clean or clean with foam
detergents.

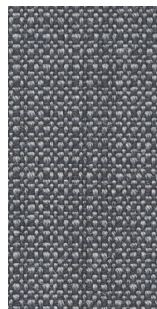
Samples are purely indicative because of
natural inconsistencies that occur in the
raw materials. As a result there may be
small differences in the product delivered.



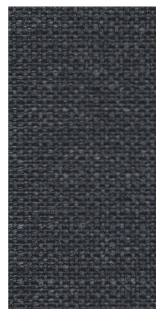
04033



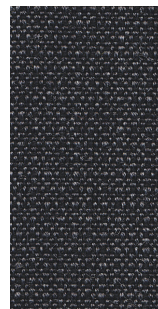
04021



04022



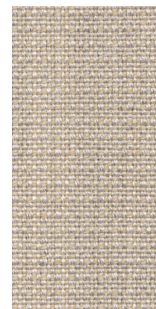
04011



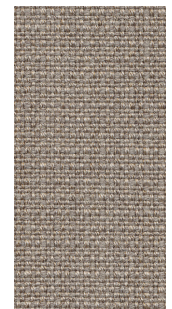
04013



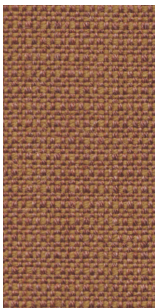
04031



04032



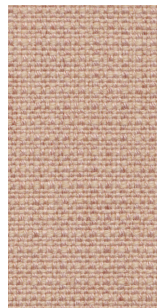
04115



04701



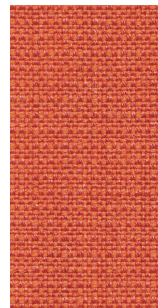
04123



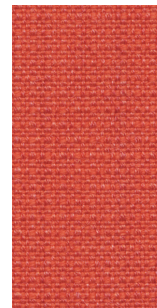
04711



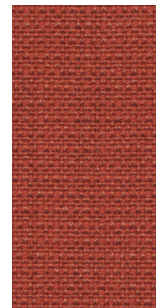
04712



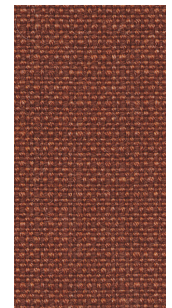
04430



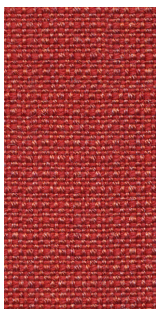
04431



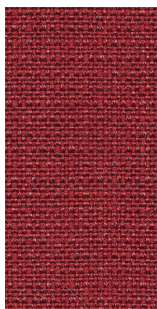
04302



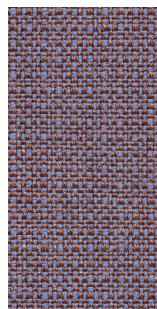
04301



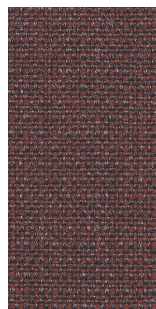
04432



04411



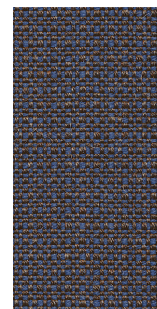
04702



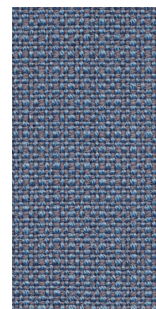
04721



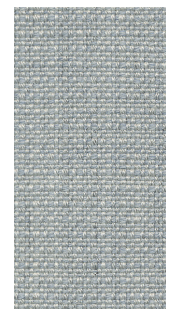
04722



04125

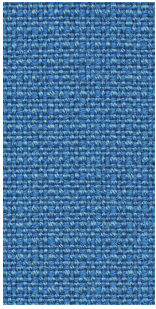


04604

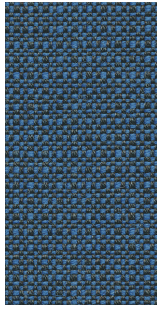


04034

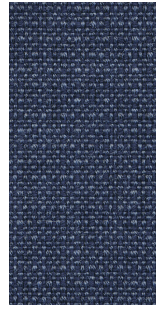
Cat B - Crisp GABRIEL



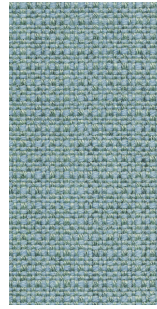
04601



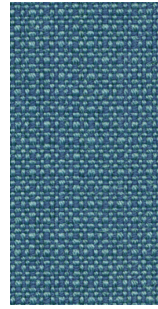
04122



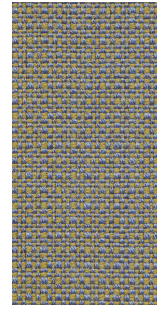
04741



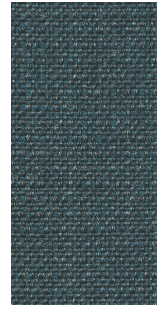
04751



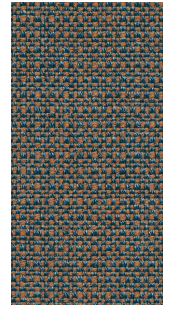
04602



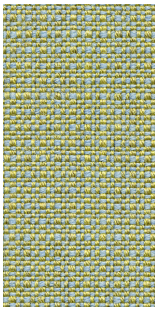
04603



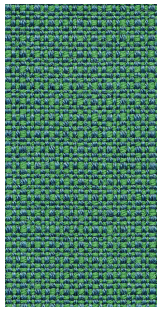
04723



04731



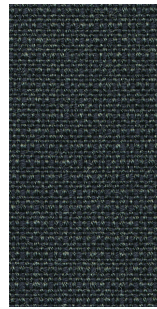
04201



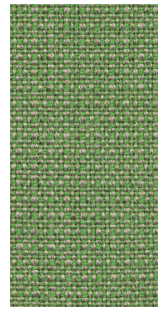
04605



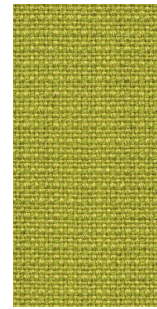
04752



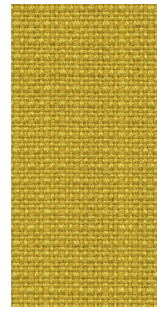
04761



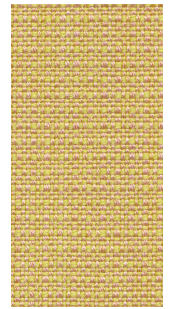
04117



04203



04211



04771



Cat B - Nattè SUNBRELLA

Application

Contract and domestic use.

Description

Composition:
100% Sunbrella® Acrylic
Width: 140 cm
Weight: app. 385 g/lin.m

Tests

Water-Repellent
Spray test ISO 4920 class 5
Colour fastness
UV indoor ISO105B02 class 8
Weather outdoor ISO105B04 1000H
Class 4-5
Dry friction ISO105X12 Class 5

Care

Dry clean or clean with foam
detergents.

Samples are purely indicative because of natural inconsistencies that occur in the raw materials. As a result there may be small differences in the product delivered.





Cat B - Iris RADA

Application

Contract and domestic use.

Description

Composition:
100% PET RECYCLED
(made with recycled plastic bottles)
Width: 140 cm
Weight: app. 800 g/lin.m

Tests

Abrasion
App. 100.000 Martindale rubs
EN ISO 12947

Pilling

dry 4-5, EN ISO 12945
wet 4, EN ISO 12945

Light fastness 7, ISO 105-B02

Flame resistance
EN 1021-1/2

BS 5852, flame

BS 5852, cigarette test

IMO FTP-8 Res.A652

UNI 9175, class 1 I-M

US Cal. Tech. Bull. 117.2013

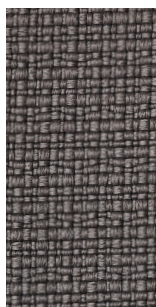
Care

Dry clean or clean with foam
detergents.

Samples are purely indicative because of natural inconsistencies that occur in the raw materials. As a result there may be small differences in the product delivered.



601



602



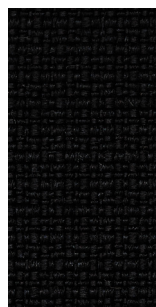
604



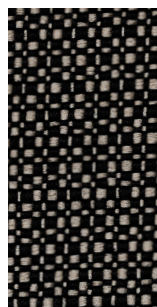
610



605



200



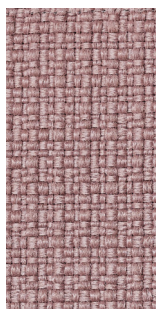
406



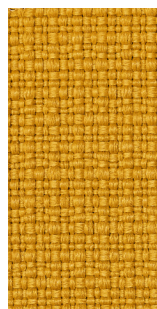
402



111



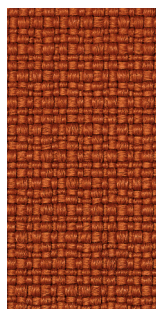
901



501



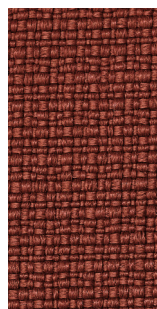
308



307



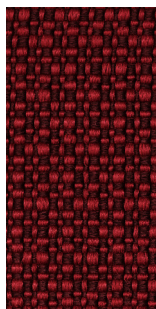
404



304



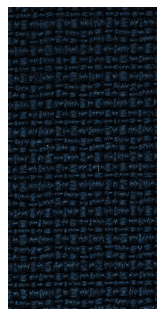
302



306



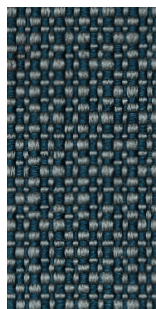
303



706



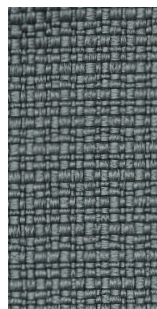
705



703



701



711



801

tessuto / fabric / Stoff / tissu / tejido

Cat C - Canvas 2 KVADRAT

Design

Giulio Ridolfo

Application

Offices, hotels,
institutions, domestic use.

Description

Composition:
90% new wool, 10% nylon
Yarn type: Worsted
Binding: Semi-plain weave
Width: 140 cm
Weight: app. 480 g/lin.m

Tests

Abrasion
App. 100.000 Martindale rubs
EN ISO 12947

Pilling
Note 4-5, EN ISO 12945

Light fastness
Note 5-7, ISO 105-B02

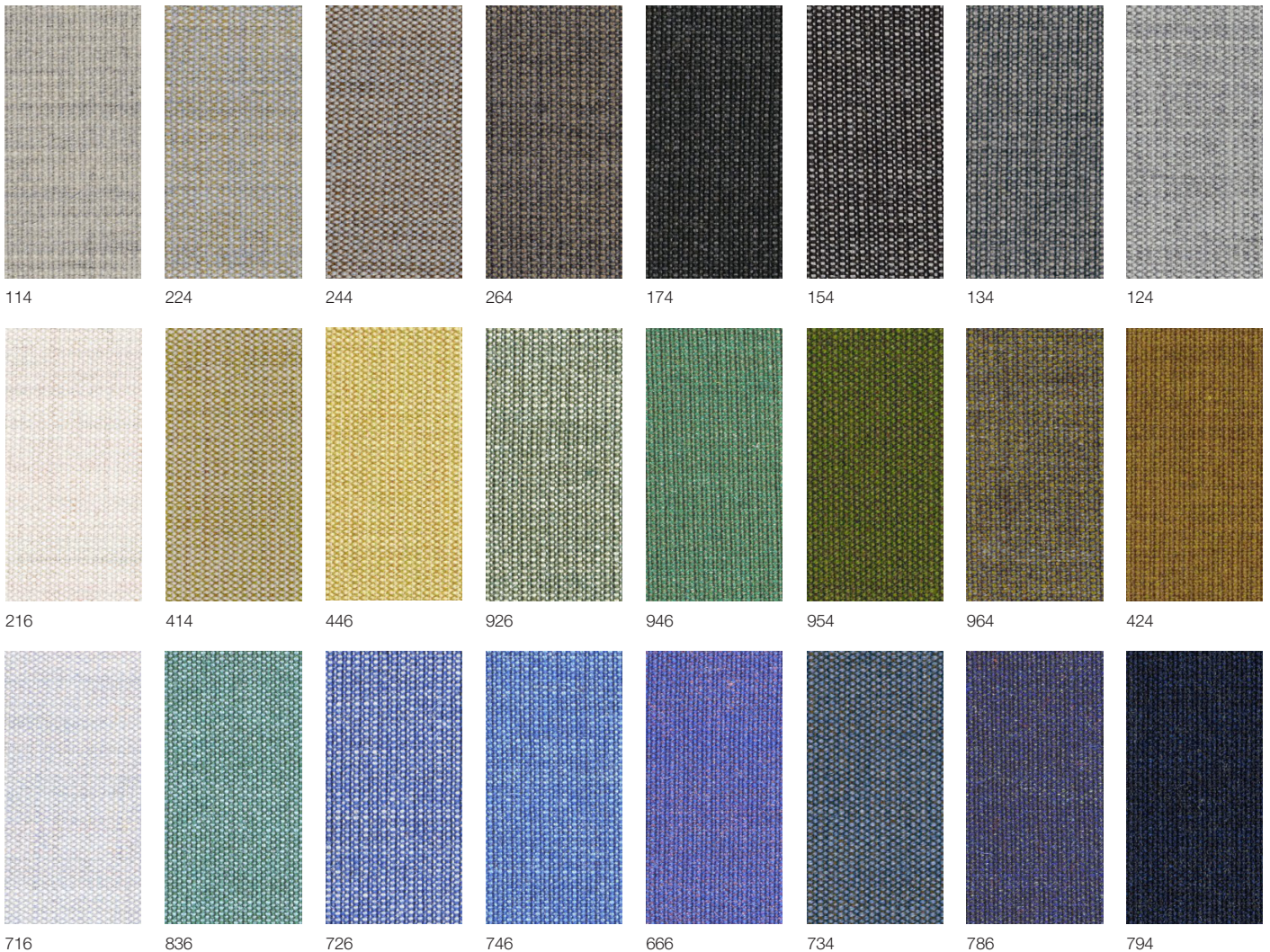
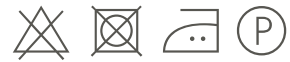
Flame resistance

EN 1021-1/2
BS 5852 part 1
BS 5852, ignition source 2-3
DIN 4102 B2
Önorm B1/Q1
NF D 60 013
UNI 9175, 1IM
US Cal. Tech. Bull. 117
IMO A.652(16)

Care

Dry clean or clean with foam
detergents.

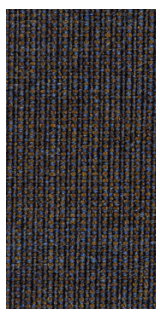
Samples are purely indicative because of
natural inconsistencies that occur in the
raw materials. As a result there may be
small differences in the product delivered.



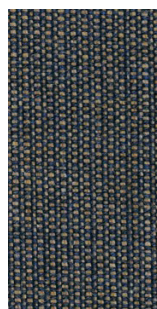
Cat C - Canvas 2 KVADRAT



684



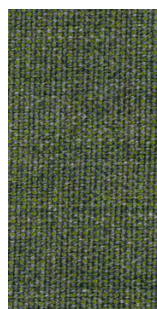
764



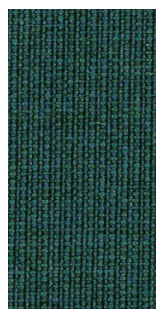
854



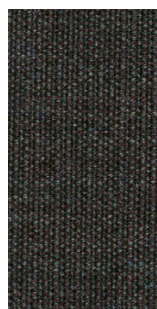
996



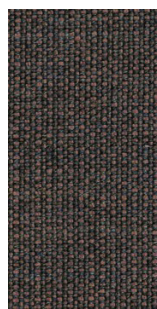
974



984



364



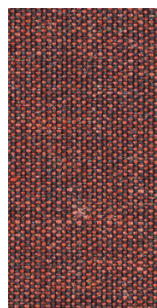
674



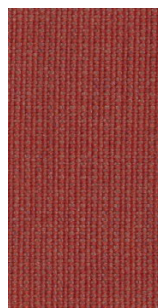
694



654



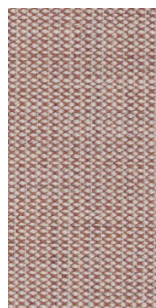
576



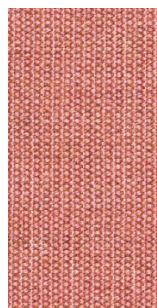
644



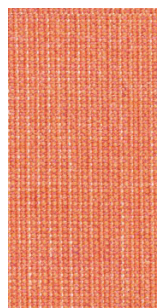
356



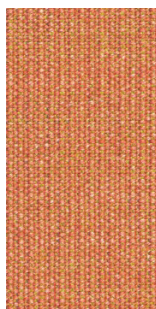
614



566



546



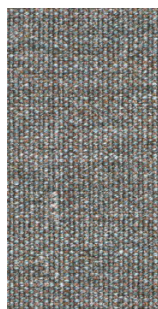
556



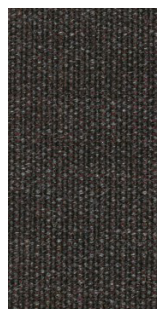
454



254



936



374

tessuto / fabric / Stoff / tissu / tejido

Cat C - Clara 2 KVADRAT

Design

Anne Birgitte Hansen

Application

Offices, hotels,
institutions, domestic use.

Description

Composition:
92% new wool worsted, 8% nylon
Yarn type: Staple, worsted
Binding: Semi-plain weave
Width: 138 cm
Weight: app. 400 g/lin.m

Tests

Abrasion
App. 80.000 Martindale rubs,
EN ISO 12947

Pilling
Note 4, EN ISO 12945

Light fastness
Note 5-7, ISO 105-B02

Flame resistance
EN 1021-1/2
BS 5852, ignition source 2-3
DIN 4102 B2
NF D 60 013
UNI 9175 11M
US Cal. Tech. Bull. 117, Sec. E
NFPA 260
IMO A.652(16)

Care

Vacuuming and dry cleaning.

Samples are purely indicative because of natural inconsistencies that occur in the raw materials. As a result there may be small differences in the product delivered.



tessuto / fabric / Stoff / tissu / tejido

Cat C - Fiord 2 KVADRAT

Design

Louise Sigvardt & Tone Barnung

Application

Offices, hotels, institutions, domestic use.

Description

Composition:
92% new wool, 8% nylon
Yarn type: Worsted
Binding: Dobby
Width: App. 140 cm (app. 55 inches)
Weight: App. 500 g/lin.m

Tests

Abrasion
App. 60.000 Martindale rubs
EN ISO 12947

Pilling
Note 4-5, EN ISO 12945

Light fastness
Note 5-7, ISO 105-B02

Flame resistance
EN 1021-1/2
BS 5852 part 1
DIN 4102 B2
NF D 60 013
UNI 9175 1IM
US Cal. Bull. 117-2013
IMO FTP Code 2010:Part 8
With flame retardant treatment:
BS 5852 Crib 5

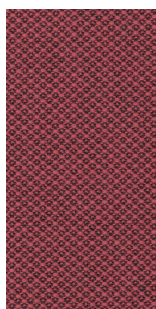
Care

Vacuuming and dry cleaning

Samples are purely indicative because of natural inconsistencies that occur in the raw materials. As a result there may be small differences in the product delivered.



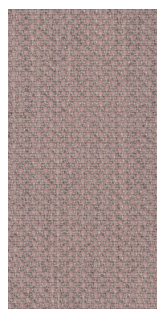
Cat C - Fiord 2 KVADRAT



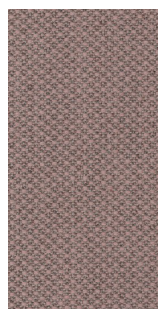
662



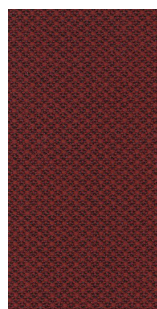
642



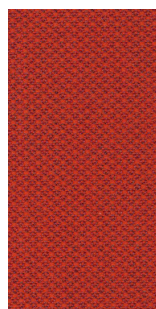
521



551



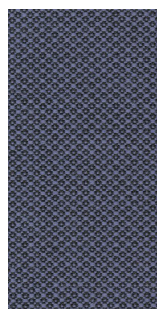
581



571



562



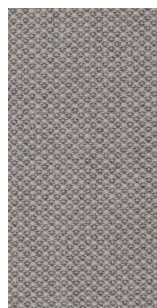
672



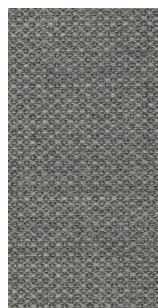
201



101



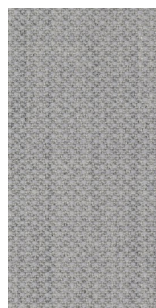
251



151



171



121



191

tessuto / fabric / Stoff / tissu / tejido

Cat C - Hallingdal 65 KVADRAT

Design

Nanna Ditzel

Application

Offices, hotels,
institutions, domestic use.
Great durability

Description

Composition:
70% new wool, 30% viscose

Yarn type: Stapel

Binding: Plain

Width: 130 cm

Weight: app. 795 g/lin.m

Samples are purely indicative because of natural inconsistencies that occur in the raw materials. As a result there may be small differences in the product delivered.

Tests

Abrasion
App. 100.000 Martindale rubs
EN ISO 12947

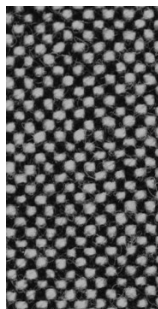
Pilling
Note 3, EN ISO 12945

Light fastness
Note 5-7, ISO 105-B02

Flame resistance
EN 1021-1/2
BS 5852, ignition source 2-5
DIN 4102 B2
Onorm B1/Q1
UNI 9175/UNI 9176, 1IM
US Cal. Tech. Bull. 117
IMO A.652(16)

Care

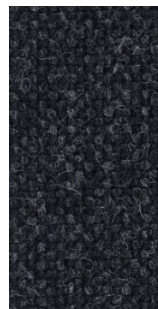
Dry clean or clean with foam
detergents.



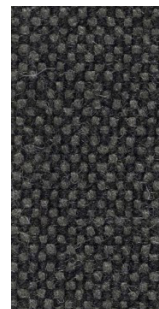
166



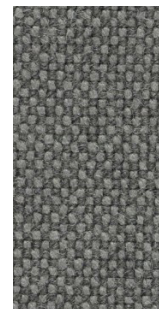
190



180



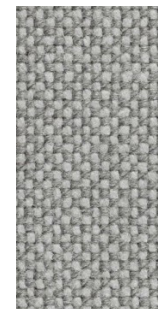
173



153



143



123



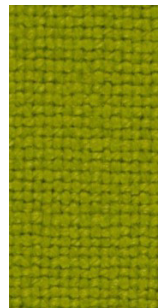
113



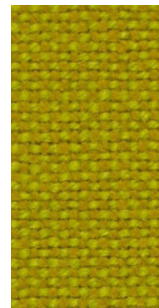
103



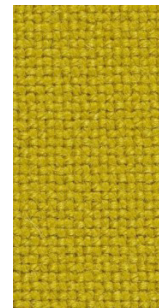
110



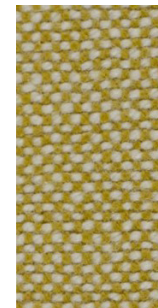
907



420



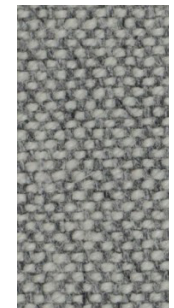
457



407



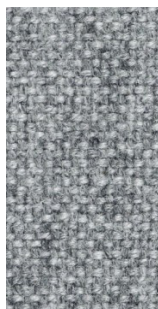
100



116



126



130



227



224



220



200



270



350

Cat C - Hallingdal 65 KVADRAT



370



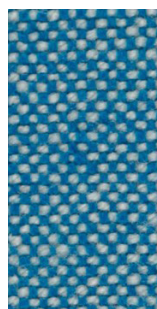
368



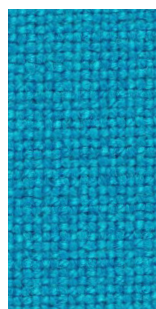
376



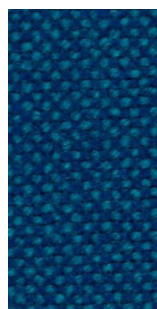
390



840



850



810



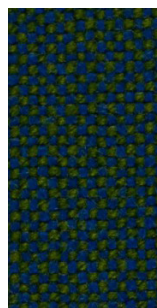
723



733



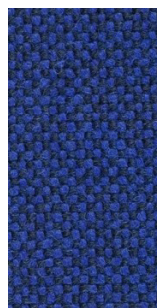
750



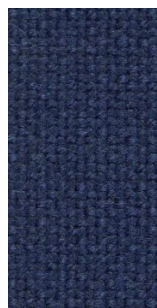
890



754



773



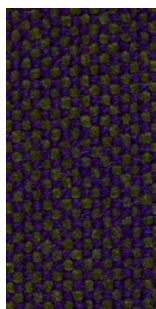
764



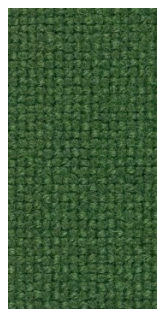
763



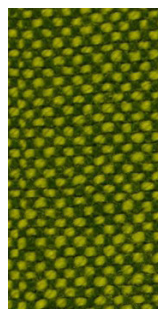
702



968



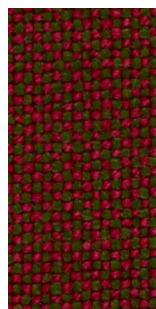
944



980



960



660



563



573



694



687



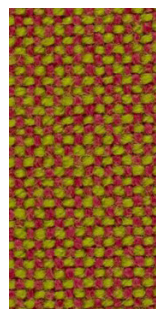
657



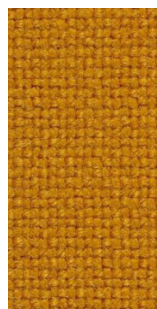
674



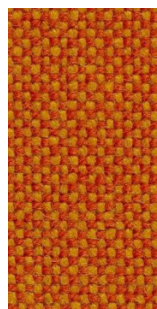
680



526



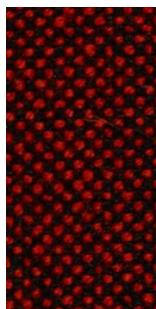
547



590



600



596

tessuto / fabric / Stoff / tissu / tejido

Cat C - Remix 3 KVADRAT

Design

Giulio Ridolfo

Application

Offices, hotels,
institutions, domestic use.
Great durability

Description

Composition:
90% new wool, 10% nylon

Yarn type: Stapel, worsted

Binding: Plain weave

Width: 135 cm

Weight: app. 460 g/lin.m

Samples are purely indicative because of natural inconsistencies that occur in the raw materials. As a result there may be small differences in the product delivered.

Tests

Abrasion
App. 100.000 Martindale rubs,
EN ISO 12947

Pilling
Note 3-4, EN ISO 12945

Light fastness
Note 5-7, ISO 105-B02

Flame resistance
EN 1021-1/2
BS 5852, ignition source 2-3
Onorm B1/Q1
UNI 9175, 1IM
Cal. Tech. Bull. 117, Sec. E
IMO A.652(16)

Care

Dry clean or clean with foam
detergents.



0575/13



Flame Resistant



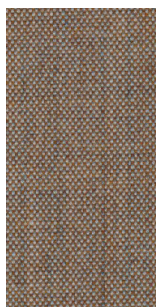
356



346



326



242



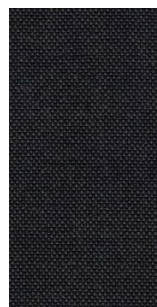
223



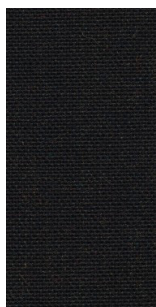
233



276



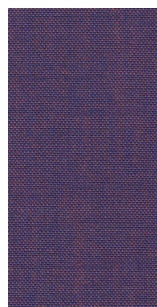
286



393



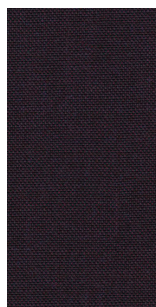
296



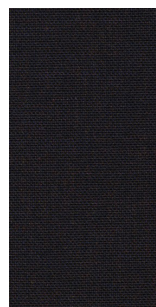
686



682



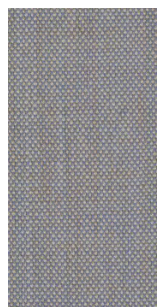
692



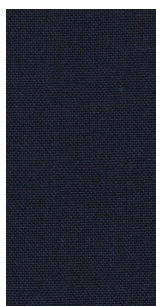
783



266



606



773



866



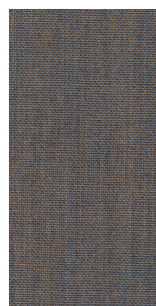
762



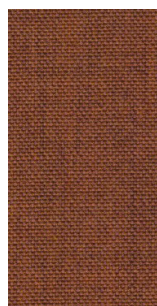
816



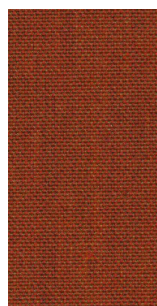
823



722



452



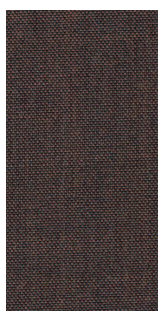
443

Cat C - Remix 3 KVADRAT

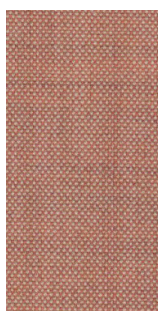


tessuto / fabric / Stoff / tissu / tejido

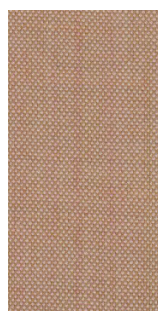
Cat C - Remix 3 KVADRAT



672



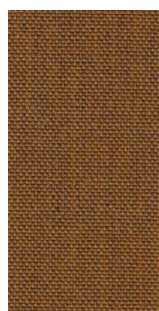
612



406



252



433



422



412



942

tessuto / fabric / Stoff / tissu / tejido

Cat C - Tonica 2 KVADRAT

Design

Georgina Wright

Application

Offices, hotels,
institutions, domestic use.

Description

Composition:

100% new wool

Yarn type: Stapel

Binding: Plain

Width: 140 cm

Weight: app. 700 g/lin.m

Tests

Abrasion

App. 45.000 Martindale rubs,
EN ISO 12947

Pilling

Note 4-5, EN ISO 12945

Light fastness

Note 5-7, ISO 105-B02

Flame resistance

EN 1021-1/2

BS 5852, ignition source 2-4

DIN 4102 B2

Önorm B1/Q1

UNI 9175/UNI 9176, 1IM

Cal. Tech. Bull. 117, Sec. E

IMO A.652(16)

Care

Vacuuming and dry cleaning

Samples are purely indicative because of natural inconsistencies that occur in the raw materials. As a result there may be small differences in the product delivered.



693



383



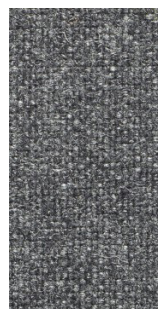
353



223



192



132



182



171



123



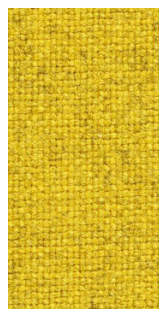
111



233



411



443



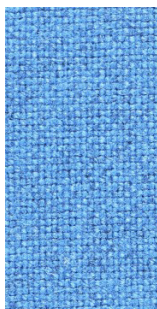
813



713



723



733



743



763



773



732



672



623



633

Cat C - Tonica 2 KVADRAT



831



832



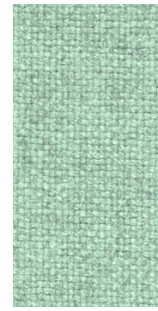
873



962



933



923



613



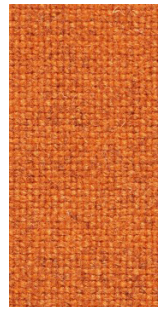
523



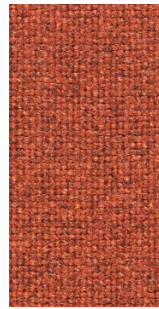
533



511



543



531



611



643



612



Cat C - Lapalma Smart

Application

Contract and domestic use

Description

Composition:
100% SOLUTION DYED ACRILIC
Width: 140cm
Weight Gr./mtl.: 700

Tests

Shrinkage after dry cleaning
Warp: -1 % Weft: -1 %

Shrinkage after washing
Warp: -3 % Weft: -3 %

Resistance to PILLING
after 2000 cycles
Note 4 EN ISO 12945-2

Abrasion
20000 Cicli EN ISO 12947-2

Light fastness
Note 7/8 EN ISO105B02

Color fastness to washing
Note 5 EN ISO105C06

Color fastness to dry Cleaning
Note 5 EN ISO105D01

Color fastness
to crocking Test WET
Note 4/5 EN ISO105X12

Color fastness
to crocking Test DRY
Note 5 EN ISO105X12

Care

Cleaning: Vacuuming
Mount in moist condition.
Mildew growth is not promoted
by the textile but mildew may
grow on dirt and other foreign
substances if not removed.
Keep the textile dry to avoid
mildew spores to stick.

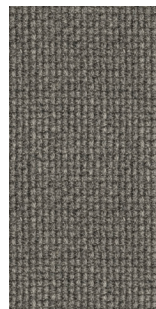
Samples are purely indicative because of natural inconsistencies that occur in the raw materials. As a result there may be small differences in the product delivered.



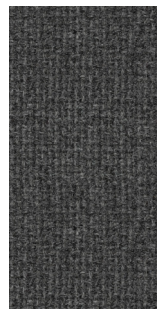
211



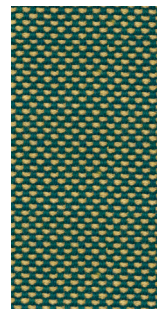
213



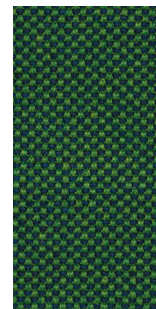
214



203



219



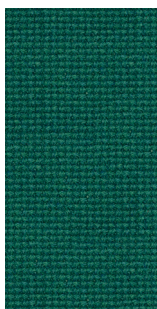
218



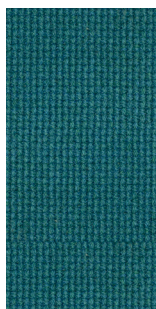
204



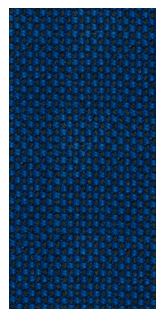
205



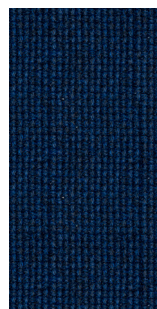
206



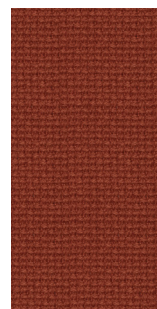
210



217



209



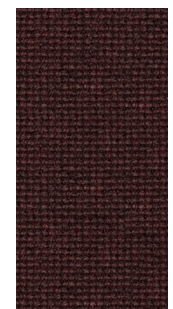
201



207



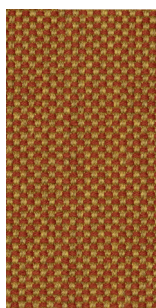
202



208



224



223

tessuto / fabric / Stoff / tissu / tejido

Cat D - Divina MD KVADRAT

Design

Finn Skodt

Application

Offices, hotels, institutions, domestic use.

Description

Composition: 100% new wool
 Yarn type: Stapel
 Binding: 4-end broken twill
 Width: 150 cm
 Weight: app. 820 g/lin.m

Tests

Abrasion
 App. 45.000 Martindale rubs,
 EN ISO 12947

Pilling
 Note 3, EN ISO 12945

Light fastness
 Note 5-7, ISO 105-B02

Flame resistance
 EN 1021-1/2
 BS 5852, ignition source 2-5
 DIN 4102 B2
 Onorm B1/Q1
 NF D 60 013
 UNI 9175 1IM
 US Cal. Tech. Bull. 117
 AS.NZS 1530.3
 IMO A.652(16)

Care

Dry clean or clean with foam detergents.

Samples are purely indicative because of natural inconsistencies that occur in the raw materials. As a result there may be small differences in the product delivered.



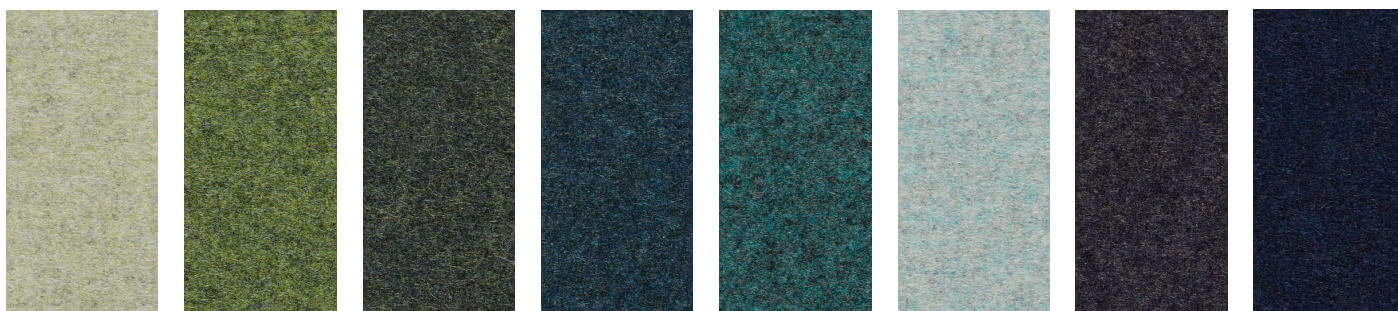
0575/13



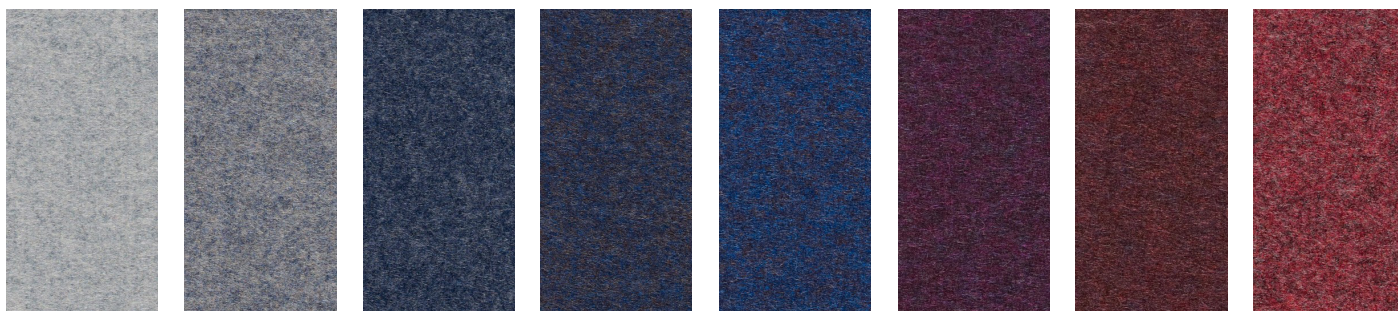
Flame Resistant



193 353 343 363 453 213 413 203



913 943 973 873 843 813 293 783



713 733 743 753 773 683 673 653

tessuto / fabric / Stoff / tissu / tejido

Cat D - Divina MD KVADRAT



633



613



433

tessuto / fabric / Stoff / tissu / tejido

Cat D - Divina Melange 3 KVADRAT

Design

Finn Sködt

Application

Offices, hotels, institutions, domestic use.

Description

Composition:

100% New wool

Yarn type: Stapel

Binding: 4-end broken twill

Width: 150 cm

Weight: app. 820 g/lin.m

Tests

Abrasion
App. 45.000 Martindale rubs
EN ISO 12947

Pilling
Note 3, EN ISO 12945

Light fastness
Note 7, ISO 105-B02

Flame resistance
EN 1021-1/2
BS 5852, ignition source 2-5 DIN 4102 B2
Önorm B1/Q1
UNI 9175/UNI 9176, 11M
US Cal. Tech. Bull. 117
IMO A.652(16)

Care

Dry clean or clean with foam detergents.

Samples are purely indicative because of natural inconsistencies that occur in the raw materials. As a result there may be small differences in the product delivered.



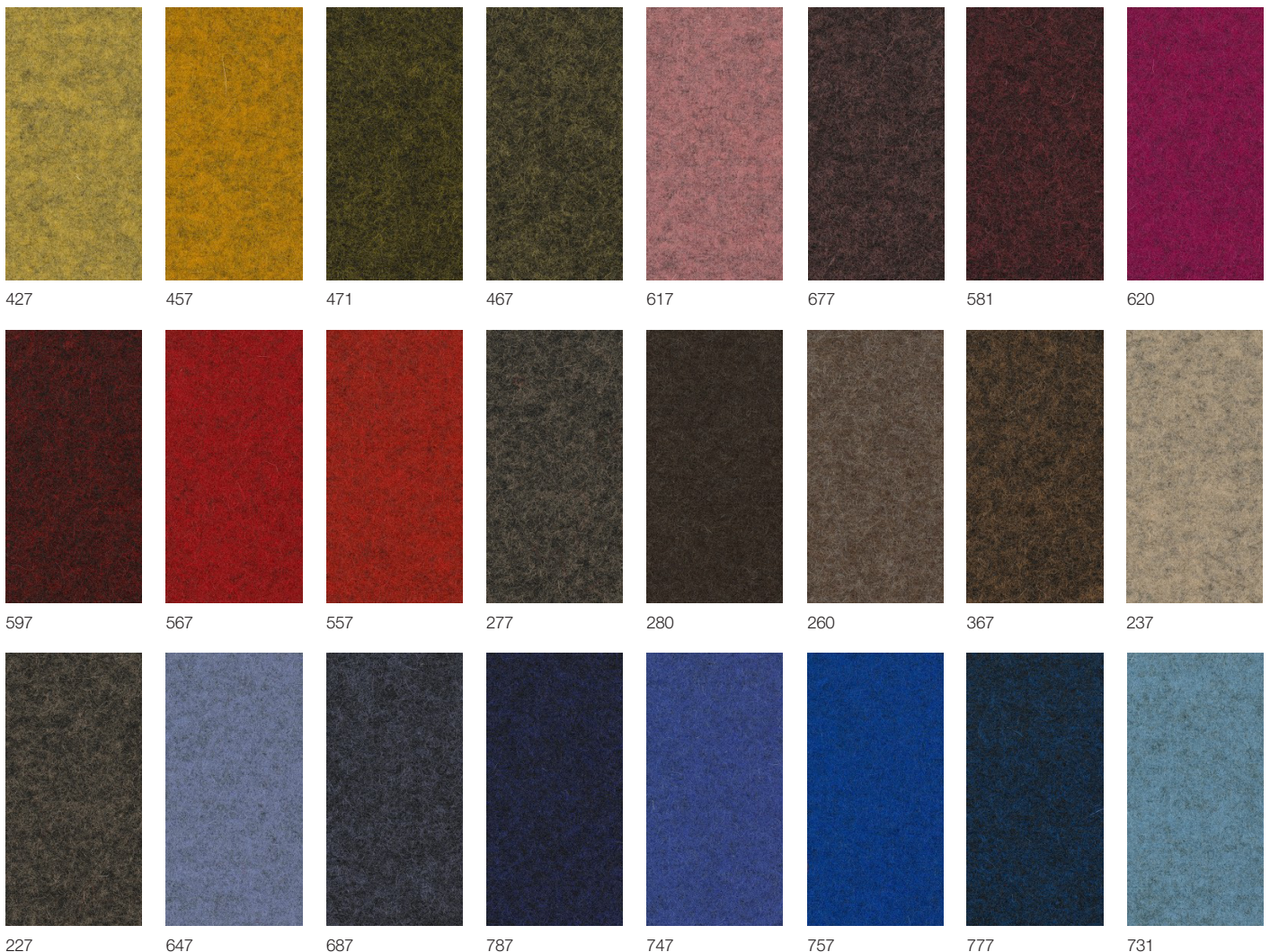
0575/13



Flame Resistant



WOOL OF NEW ZEALAND



tessuto / fabric / Stoff / tissu / tejido

Cat D - Divina Melange 3 KVADRAT



547



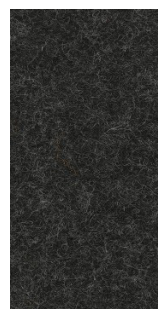
527



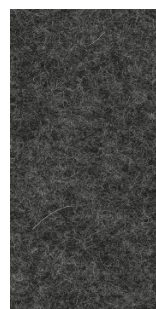
517



571



180



170



147



120



917



937



977



967



821



871

tessuto / fabric / Stoff / tissu / tejido

Cat D - Steelcut 2 KVADRAT

Design

Frans Dijkmeijer
Giulio Ridolfo

Width: 140 cm

Weight: app. 825 g/lin.m

Flame resistance

EN 1021-1/2

BS 5852, ignition source 2

DIN 4102 B2

Onorm B1/Q1

Italian Class 1IM

US Cal. Tech. Bull. 117

IMO A.652(16)

Application

Offices, hotels,
institutions, domestic use.
Great durability

Tests

Abrasion

App. 100.000 Martindale rubs,
EN ISO 12947

Pilling

Note 3-4, EN ISO 12945

Care

Vacuuming and dry cleaning.

Description

Composition:

90% new wool, 10% nylon

Yarn type: Stapel, worsted

Binding: Semi-plain

Light fastness

Note 5-7, ISO 105-B02

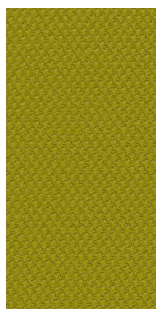
Samples are purely indicative because of natural inconsistencies that occur in the raw materials. As a result there may be small differences in the product delivered.



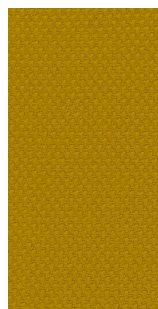
0575/13



WOOL OF NEW ZEALAND



435



445



240



255



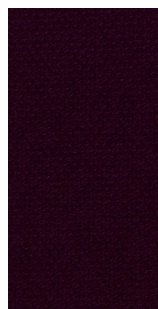
365



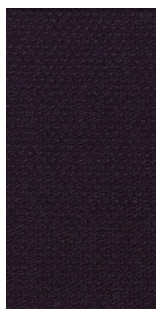
135



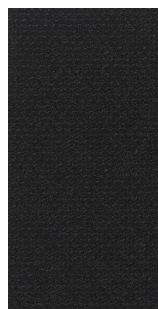
370



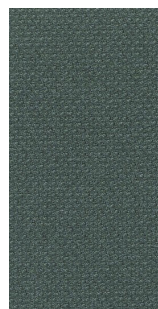
625



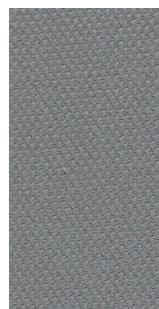
685



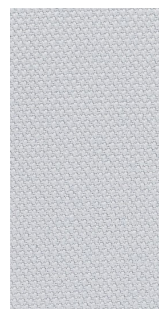
190



180



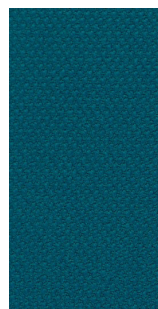
155



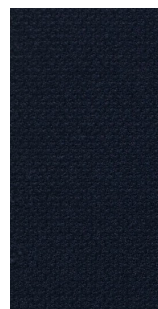
120



820



835



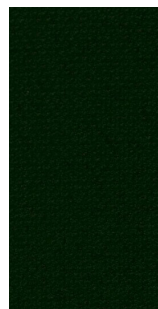
775



760



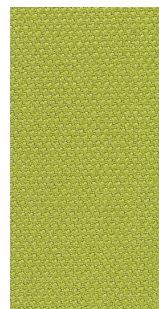
780



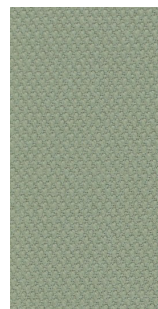
975



985



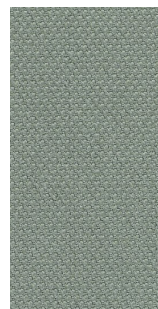
950



935



265



160

tessuto / fabric / Stoff / tissu / tejido

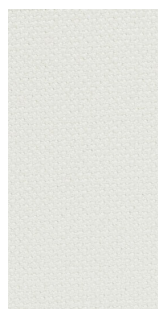
Cat D - Steelcut 2 KVADRAT



140



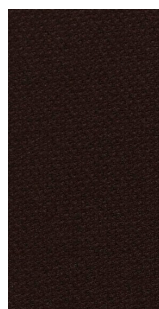
220



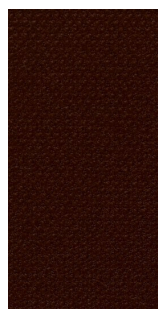
110



380



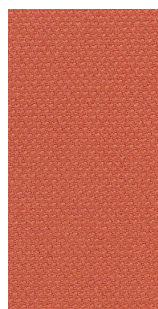
695



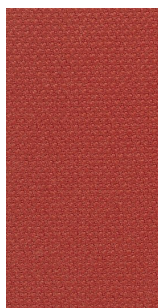
655



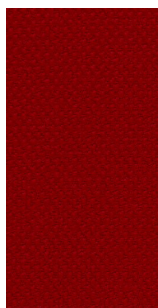
535



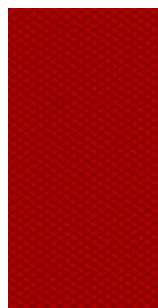
550



660



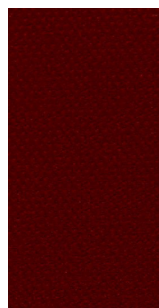
635



545



605



615

tessuto / fabric / Stoff / tissu / tejido

Cat D - Steelcut Trio 3 KVADRAT

Design

Frans Dijkmeijer
Giulio Ridolfo

Width: 140 cm

Weight: app. 770 g/lin.m

Flame resistance

EN 1021-1/2

BS 5852, ignition source 2

DIN 4102 B2

Onorm B1/Q1

Italian Class 1IM

US Cal. Tech. Bull. 117

IMO A.652(16)

Application

Offices, hotels,
institutions, domestic use.
Great durability

Tests

Abrasion

App. 100.000 Martindale rubs,

EN ISO 12947

Pilling

Note 3-4, EN ISO 12945

Care

Vacuuming and dry cleaning.

Description

Composition:

90% new wool, 10% nylon

Yarn type: Stapel, worsted

Binding: Semi-plain

Light fastness

Note 5-7, ISO 105-B02

Samples are purely indicative because of natural inconsistencies that occur in the raw materials. As a result there may be small differences in the product delivered.



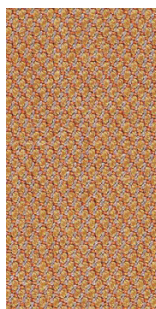
0575/13



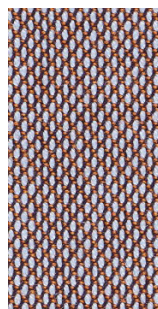
WOOL
OF
NEW ZEALAND



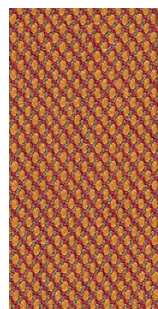
EU
Ecolabel
www.ecolabel.eu
DK/16/24



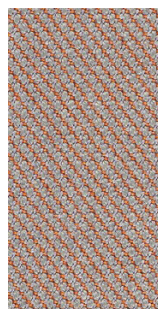
436



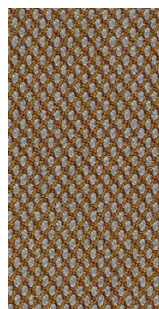
416



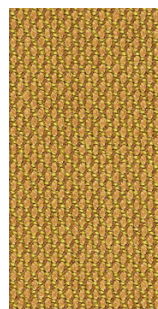
576



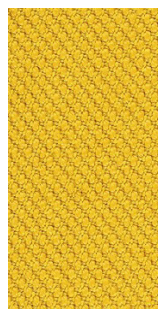
426



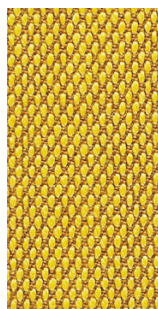
476



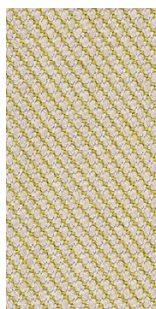
466



446



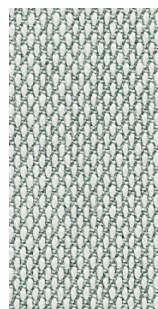
453



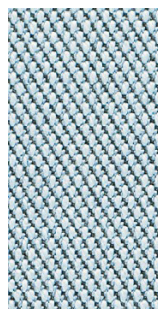
236



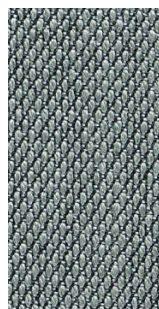
105



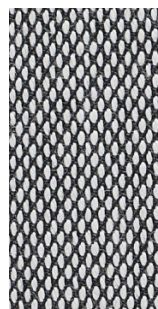
113



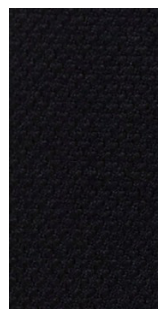
713



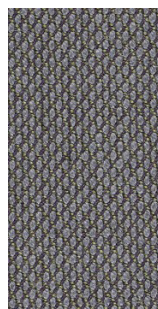
153



124



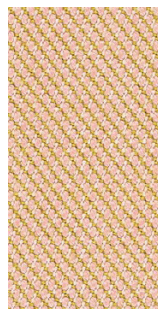
195



176



133



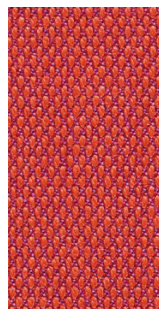
506



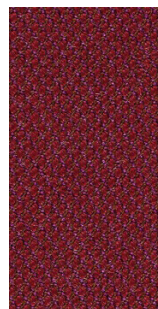
616



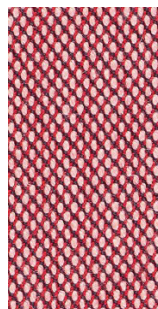
645



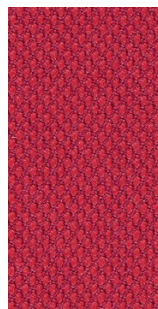
553



686

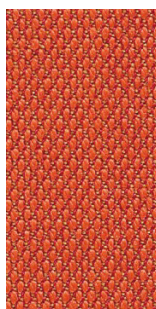


636

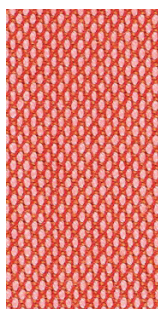


666

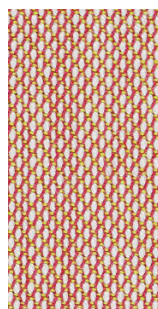
Cat D - Steelcut Trio 3 KVADRAT



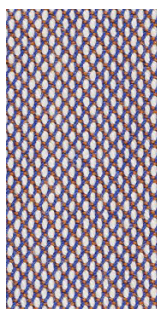
533



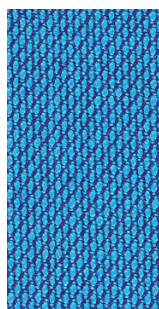
526



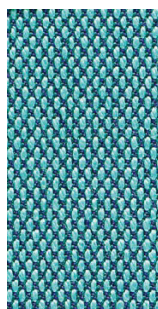
515



806



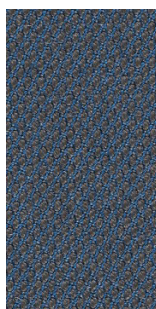
865



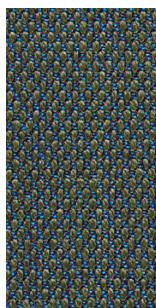
983



776



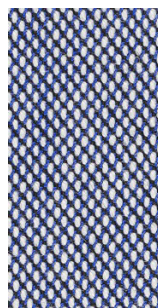
756



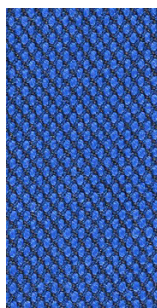
883



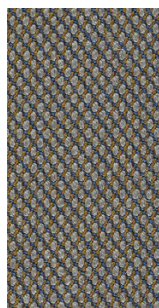
796



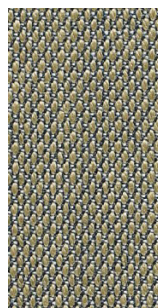
716



746



266



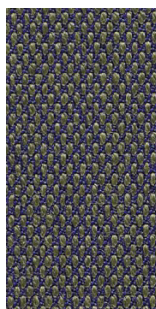
253



205



246



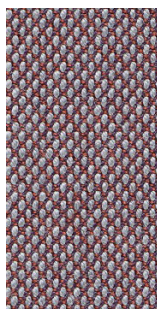
283



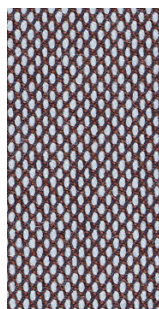
376



383



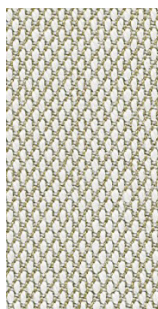
276



336



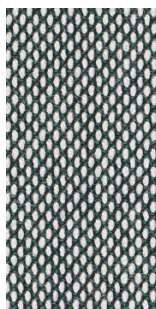
226



213



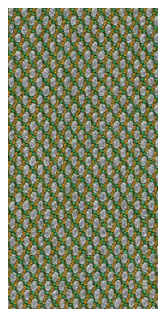
996



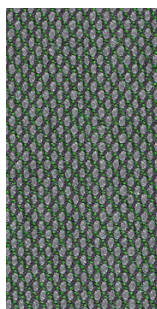
916



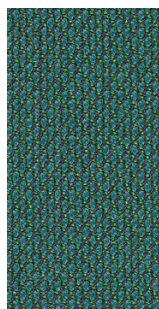
906



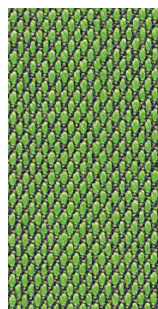
946



966



976



953

tessuto / fabric / Stoff / tissu / tejido

Cat E - Uniform Melange KVADRAT (Fabric to upholster SCREEN tubes only)

Design

Febrik

Application

Contract and domestic use.

Description

Composition:
68% new wool, 22% viscose
10% polyester 2mm foam
Width: 165 cm
Weight: app. 870 g/lin.m

Tests

Abrasion
App. 100.000 Martindale rubs,
EN ISO 12947

Pilling
Note 4, EN ISO 12945

Light fastness
6, ISO 105-B02

Flame resistance
EN 1021-1/2
BS 5852,part 1
DIN 4102 B2
Onorm B1/Q1
UNI 9175/UNI 9176, 11M
US Cal. Tech. Bull. 117.2013
IMO FTP code 2010:part 8

Care

Dry clean or clean with foam
detergents.

Samples are purely indicative because of natural inconsistencies that occur in the raw materials. As a result there may be small differences in the product delivered.



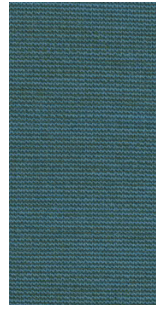
Cat E - Uniform Melange KVADRAT



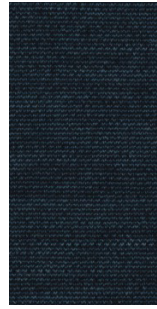
813



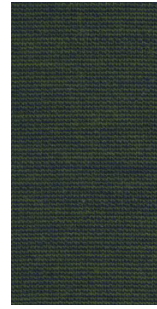
963



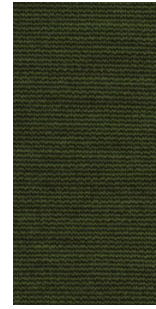
833



883



983



993



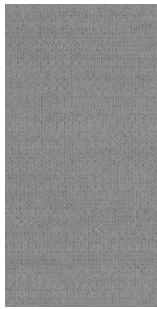
453



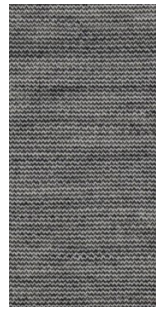
933



913



123



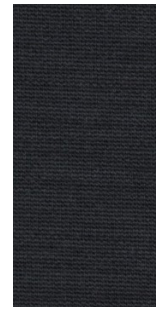
133



163



183



193

eco pelle / eco-leather / Kunstleder / simil cuir / ecopiel

Cat A - Grimm Fr MP

Application

Contract and domestic use

Description

Composition

31% CO - 68% PVC- 1% PU

Weight g/m2 640

Width cm 140

Tests

Abrasion

resistance cicli / cycles EN ISO 5470-2
150000

Colour fastness to light (Xenotest)

UNI EN ISO 105-B02 7 colour change

Dry rubbing

ISO 105 X-12 4/5

Wet rubbing

ISO 105 X-12 4/5

Acid perspiration

ISO 105 E-04 4/5

Alcaline perspiration

ISO 105 E-04 4/5

Bending strenght cycles

UNI 4818-13 150000

Tensile strenght

ISO1421, Met.1 550 N warp, 300N weft

Tear strenght

ISO 4674-1 40 N warp, 45N weft

Flame resistance

EN 1021-1 EN 1021-2

NF D 60-013

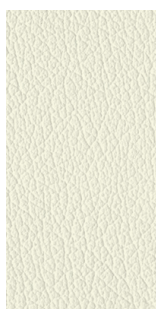
UNI 9175 CL. 1IM

BS 5852 crib 5

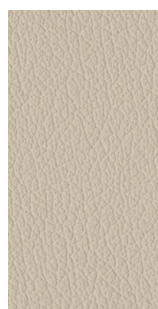
Care

Clean with a damp cloth
and mild soap.

Samples are purely indicative because of natural inconsistencies that occur in the raw materials. As a result there may be small differences in the product delivered.



1C8



4P2



4H8



5P4



101



2PB



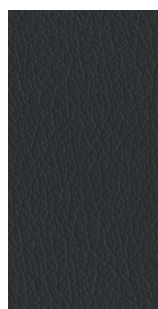
2C7



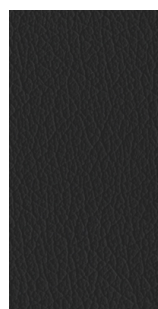
5H3



5PE



2PA



2DJ



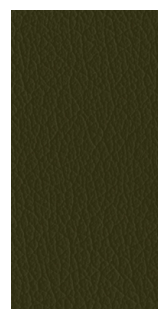
901



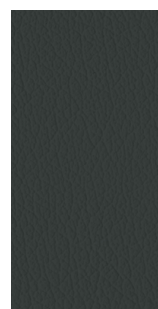
3CS



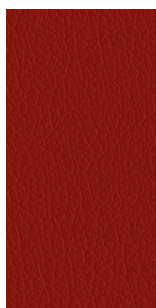
7P5



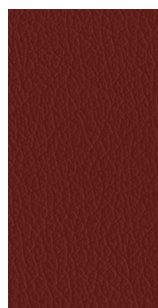
7FC



7EM



6VZ



6P1



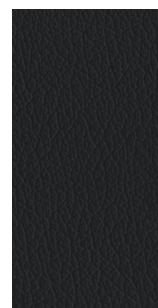
6KH



6P7



8P8



8H4



8P9



5P3

eco pelle / eco-leather / Kunstleder / simil cuir / ecopiel

Cat B - Valencia c5 SPRADLING

Application

Contract and domestic use.

Description

Composition:
front PVC

back polyester cotton

Width: 137 cm

Weight: app. 890 g/lin.m

Tests

Abrasion
App. 300.000 Martindale rubs
EN ISO 12947 part 2

UV Xenotest DIN54004 blue wool scale

Antibacterial Protection

Flame resistance
EN 1021-part 1/2
BS 5852, part 2
BS 5852 crib 5
FMVSS 302
FAR 25/853

Care

Dry clean or clean with foam
detergents.

Samples are purely indicative because of natural inconsistencies that occur in the raw materials. As a result there may be small differences in the product delivered.



eco pelle / eco-leather / Kunstleder / simil cuir / ecopiel

Cat B - Valencia c5 SPRADLING

							
107 7001 Amethyst	107 3068 Marine	107 2108 Night	107 3067 Delft	107 3001 Lavendel	107 3069 Baltic	107 5057 Türkis	107 2106 Coral
							
107 5056 Jade	107 2119 Teal	107 4043 Platin	107 5065 Petrol	107 4042 Titan	107 2107 Skylight	107 4040 Auster	107 4045 Perle
							
107 4044 Warm Grey	107 2116 Camel	107 2117 Cashmere	107 0035 Terracotta	107 2115 Chestnut	107 0033 Buche	107 9035 Schwarz	107 4003 Graphite
							
107 2109 Citrus	107 2110 Avocado	107 5041 Apfel	107 5001 Olive	107 5069 Grün	107 4052 Lichtgrau	107 4002 Laurel	107 4020 Silver
							
107 6020 Gold	107 1020 Ivory	107 8020 Pearlescence					

pelle / soft -leather / Softleder / peau / piel

Application

Contract and domestic use.

Description

Thickness 0,9/1,0 mm

European raw hides

Chrome tannage

Through-dyeing Aniline

Finishing pigmented

Tests

This item complies with the 3M test for oleo and hydro repellency. The Scotchgard treatment gives more protection and durability to leather.

Dry rub fastness
UNI EN ISO 11640 > 3 Grey Scale

Light fastness
UNI EN ISO 105-B02 > 3 Blue Scale

Tear resistance
UNI EN ISO 3377-1 > 20 N

Flame resistance
BS EN 1021-2:2006
No Ignition
BS EN 1021-1:2006
No Ignition

Samples are purely indicative because of natural inconsistencies that occur in the raw materials. As a result there may be small differences in the product delivered.



Care

Dust with a soft and dry cloth for the normal cleaning. Stains can be treated with a wet cloth or cotton wool and with products for the cleaning initially more delicate like neutral soap or cleansing milk. Dry immediately after treatment. Never use abrasive or aggressive products like solvents, stain removers. Never steam it. Don't use shoe cleaning products. When a new product is used for cleaning, apply it in a "hidden" area to test its effectiveness and to avoid damages where more visible. Avoid placing leather near direct sun. Keep the leather away from heat sources. Dust regularly with a soft and dry cloth.



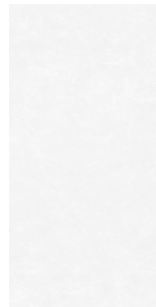
P3
Fango chiaro



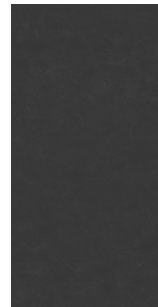
P10
Grigio



P7
Fango scuro



P4
Bianco



P9
Marrone scuro



P1
Nero



P2
Rosso

cuoio / leather / Leder / cuir / cuero

Application

Contract and domestic use.

Description

Thickness 2.4 - 2.5 mm

Cow hides

Vegetable tannage

Finishing Pigmented

Tests

Dry rub fastness
UNI EN ISO 11640
1000 cycles 5 Grey Scale

Wet rub fastness
UNI EN ISO 11640
250 cycles 5 Grey Scale

Light fastness
UNI EN ISO 105-B01
72h 4-5 Grey Scale

Adhesion of finishing
UNI EN ISO 11644 >15 N/10mm

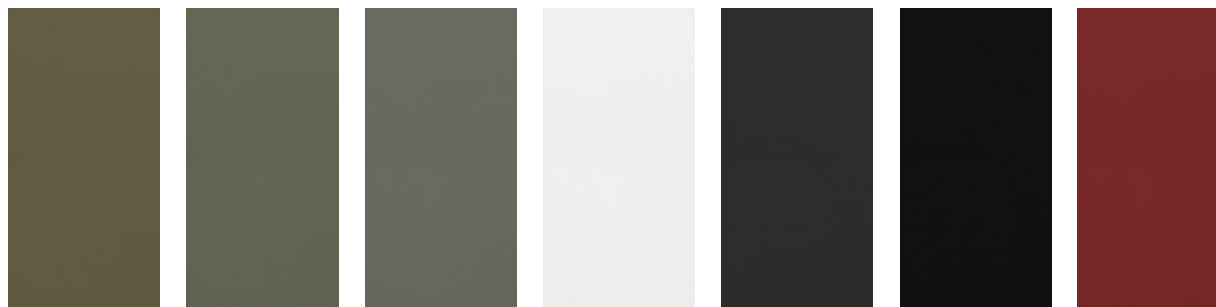
Flex resistance
UNI EN ISO 5402
20000 cycles no damages

Taber abrasion
500 cycles CS10
load 500 gr. 4-5 grey scale

Care

Dust with a soft and dry cloth for the normal cleaning. Stains can be treated with a wet cloth or cotton wool and with products for the cleaning initially more delicate like neutral soap or cleansing milk. Dry immediately after treatment. Never use abrasive or aggressive products like solvents, stain removers. Never steam it. Don't use shoe cleaning products. When a new product is used for cleaning, apply it in a "hidden" area to test its effectiveness and to avoid damages where more visible. Avoid placing leather near direct sun. Keep the leather away from heat sources. Dust regularly with a soft and dry cloth.

Samples are purely indicative because of natural inconsistencies that occur in the raw materials. As a result there may be small differences in the product delivered.



C3
Fango chiaro

C10
Grigio

C7
Fango scuro

C4
Bianco

C9
Marrone scuro

C1
Nero

C2
Rosso

corda / cord / Schnur / corde / cuerda



F5
lino

F8
tabacco

F1
black

laccati / lacquered / lackiert / laqué / lacado



LW
white

LN
black

L4
perla

L5
celeste

L6
mattone

L7
caffè

L8
oliva

L9
tortora

laminati / laminate / Laminat / lamifié / laminado



FW
laminato fenix 0,9
bianco
white laminate
Laminat weiß
lamifié blanc
laminado blanco

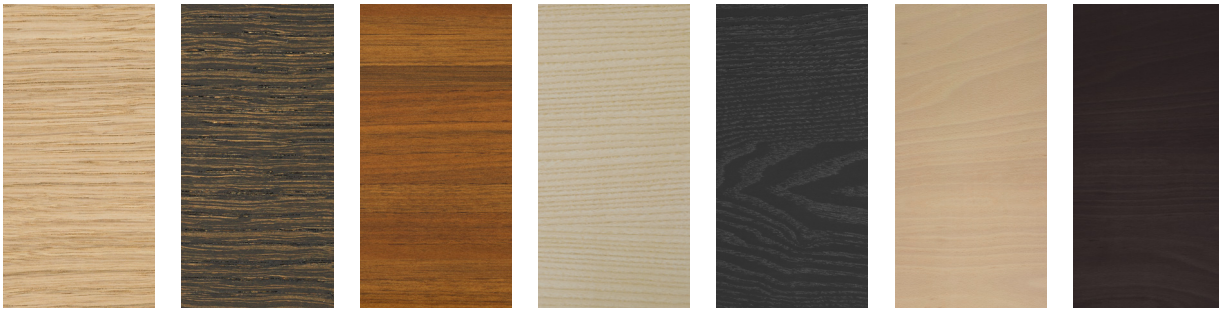
FN
laminato fenix 0,9
nero
black laminate
Laminat schwarz
lamifié noir
laminado negro

406
laminato abet 0,9
bianco
white laminate
Laminat weiß
lamifié blanc
laminado blanco

877 millerighe
alluminio
aluminium
Aluminium
aluminium
aluminio

406 millerighe
bianco
white
weiß
blanc
blanco

legno / wood / Holz / bois / madera



VS
rovere sbiancato
blanched oak
Eiche gebleicht
chêne blanchi
roble blanqueado

VL
rovere noce
oak dark walnut
Eiche dunkel
nußbaum
chêne teinté wengé
roble nogal

NC
noce Canaletto
Canaletto walnut
Nußbaum Canaletto
noyer Canaletto
nogal natural

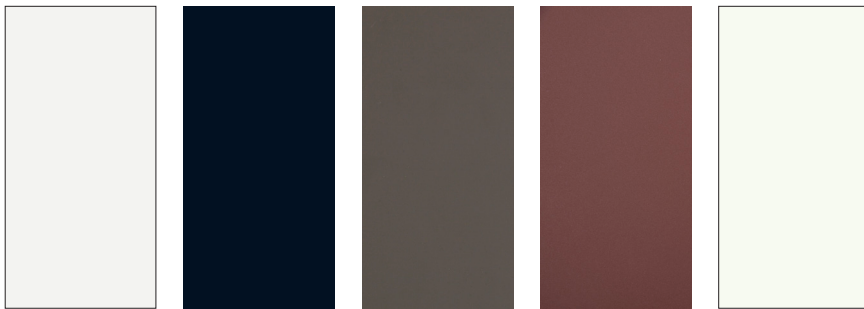
FR
frassino naturale
natural ash
Esche natur
frêne naturel
fresno natural

NO
nero poro aperto
black open pore
Eiche schwarz gebeizt
noir pore ouvert
negro poro abierto

G
faggio sbiancato
blanched beech
Buche gebleicht
hêtre blanchi
haya blanqueada

GL
faggio noce scuro
beech dark walnut
Buche dunkel
nußbaum
hêtre teinté wengé
haya nogal oscuro

HPL 10 mm



HFW
Fenix® bianco
Fenix® white
Fenix® weiß
Fenix® blanc
Fenix® blanco

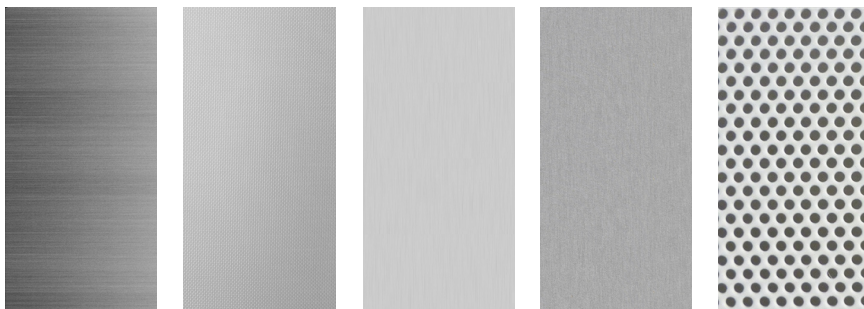
HFN
Fenix® nero
Fenix® black
Fenix® schwarz
Fenix® noir
Fenix® negro

HFG
Fenix® grigio
londra

HFR
Fenix® rosso jaipur

H406
Abet bianco
Abet white
Abet weiß
Abet blanc
Abet blanco

metalli / metal / Metall / metal / metal



acciaio inox
micropallinato
stainless steel
sandblasted
Edelstahl
sandgestrahlt
acier inox microbillé
acero inoxidable
arenado

acciaio inox tela
di lino
stainless steel
linen-pattern
Edelstahl
leinenstruktur
acier inox toile de lin
acero inoxidable
tela de lin

cromo satinato
mat chromed
matt verchromt
chromé mat
cromado mate

alluminio
micropallinato
aluminium
sandblasted
Aluminium
sandgestrahlt
aluminium
microbillé
aluminio arenado

lamiera forata
perforated metal
perforiertes Metall
métal perforé
metal perforado

verniciature a polvere / powder coating / pulverlackiert / laqué en poudre / lacadura en polvo



05
black
RAL 9005



03
white
RAL 9016



02
senape
RAL 1023



12
rubino
NCS S 2570R



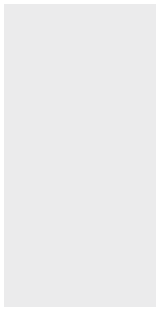
14
blu notte
NCS S 7020-R60B



16
verde petrolio
NCS S 5540B



18
grigio medio
NCS S 6500-N



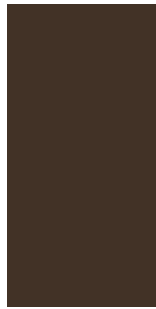
20
perla
NCS 1502Y



21
celeste
NCS 2010-B10G



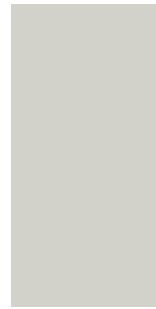
22
mattone
NCS 3560-Y70R



23
caffè
NCS 8010-Y50R

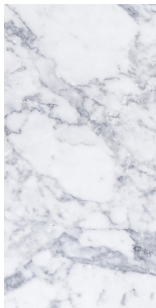


24
oliva
NCS 7020-G50Y

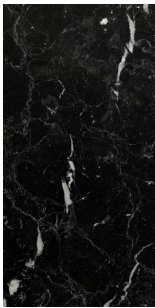


25
tortora
402C

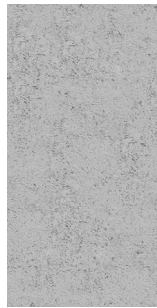
altre finiture / other finishes / weitere Ausführungen / autres finitions / otros acabados



bianco Carrara
white Carrara
Carrara-Marmor
blanc Carrara
blanco Carrara

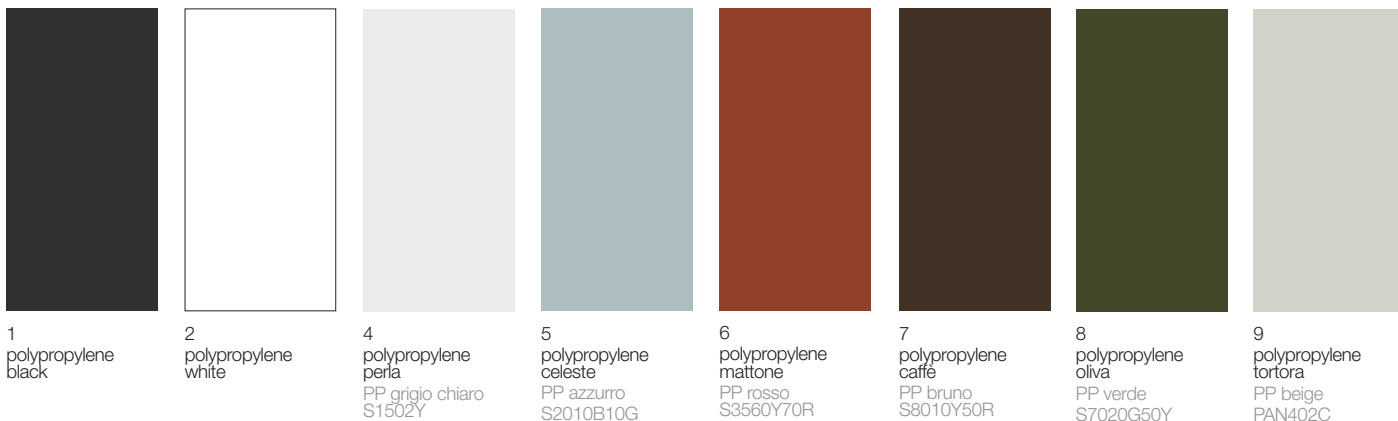


nero Marquina
black Marquina
Marquina-Marmor
noir Marquina
negro Marquina



cemento
concrete
Zement
béton
cemento

plastiche / plastics / Kunststoff / plastiques / plástica



1
polypropylene
black

2
polypropylene
white

4
polypropylene
perla
PP grigio chiaro
S1502Y

5
polypropylene
celeste
PP azzurro
S2010B10G

6
polypropylene
mattone
PP rosso
S3560Y70R

7
polypropylene
caffè
PP bruno
S8010Y50R

8
polypropylene
oliva
PP verde
S7020G50Y

9
polypropylene
tortora
PP beige
PAN402C



3
recycled grey
polypropylene

Application

Indoor and outdoor use.

Description

Recycled polypropylene is obtained thanks to a recycling process using up to 75% - 95% of recycled material.

Care

Dust with a soft and dry cloth for the normal cleaning. Never use abrasive or aggressive products like solvents, acid or basic solutions or ammonia. Any liquid spilt on the product must be wiped up immediately. Any changes in the surface and in colours may occur under particular conditions of weather exposure and cannot be considered a quality issue.

Samples are purely indicative because recycled polypropylene color can vary widely from grey to a lighter color.

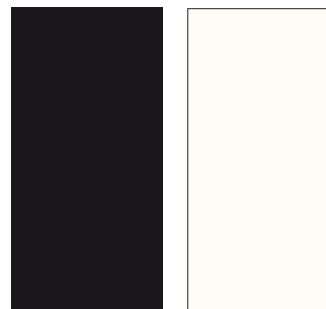
poliuretano integrale morbido / polyurethane / Polyurethan / polyuréthane / poliuretano



PU
poliuretano grigio
polyurethane grey
Polyurethan grau
polyuréthane gris
poliuretano gris

PN
poliuretano nero
polyurethane black
Polyurethan
schwarz
polyuréthane noir
poliuretano negro

Baydur®



N
Baydur® nero
Baydur® black
Baydur® schwarz
Baydur® noir
Baydur® negro

W
Baydur® bianco
Baydur® white
Baydur® weiß
Baydur® blanc
Baydur® blanco

lapalma

via majorana 26
35010 cadoneghe (PD), italy
t.: +39 049 702788
info@lapalma.it
www.lapalma.it